



PARTS LIST FOR
AIR COMPRESSOR
AM2-PH09-08M/20M/30M
AM2-PR09-08M/20M/30M
AM2-PK95-08M
AM2-SH09-20M/30M
AM2-SR09-20M/30M
AM2-SH09-B

| | |
|--------------------------|----------------------|
| ENGINE OIL GRADE: | SAE 10W-30 |
| ENGINE OIL CAPACITY | |
| HONDA: | 37 oz. |
| KOHLER: | 44.8 oz. |
| SUBARU: | 35.5 oz. |
| MAXIMUM PRESSURE: | 175 PSI |
| COMPRESSOR OIL GRADE: | SAE30W NON-DETERGENT |
| COMPRESSOR OIL CAPACITY: | 24.7 oz. |

This Parts Listing has been compiled for your benefit. You can be assured your Mi-T-M Gasoline Air Compressor was constructed and designed with quality and performance in mind. Each component has been rigorously tested to insure the highest level of acceptance.

The contents of this Parts Listing are based on the latest product information available at the time of publication. Mi-T-M reserves the right to make changes in price, color, materials, equipment, specifications or models at any time without notice.

WARNING

THIS IS A PROFESSIONAL GASOLINE AIR COMPRESSOR. CAUTION SHOULD BE OBSERVED WHEN USING OR REPAIRING THIS UNIT! READ AND FOLLOW THE SAFETY WARNINGS LISTED BELOW BEFORE ATTEMPTING ANY REPAIRS ON THIS GASOLINE AIR COMPRESSOR!

SAFETY WARNINGS

1. NEVER alter or modify the equipment. Be sure any accessory items and system components being used will withstand the pressure developed. Serious injury may occur from an air compressor malfunction or exploding accessories if incorrect system components, attachments or accessories are used. NEVER exceed manufactures maximum allowable pressure rating of attachments. Use only genuine Mi-T-M parts for repair of your air compressor. Failure to do so can cause hazardous operating conditions and will VOID warranty.
2. NEVER make adjustments on machinery while the unit is connected to the engine without first removing the ignition cable from the spark plug. Turning over the machinery by hand during adjustment or cleaning might start the engine and machinery with it, causing serious injury to the operator.
3. Know how to stop and bleed pressures quickly. Be thoroughly familiar with controls. Do not operate without protective covers/ guards.
4. Before servicing the unit, turn unit off, relieve the pressure and allow the unit to cool down. Service in a clean, dry, flat area. Block the wheels to prevent the unit from moving. Be especially careful to properly dispose of any flammable materials.
5. After testing the machine, DO NOT leave the pressurized unit unattended. Shut off the unit and release pressure before leaving.

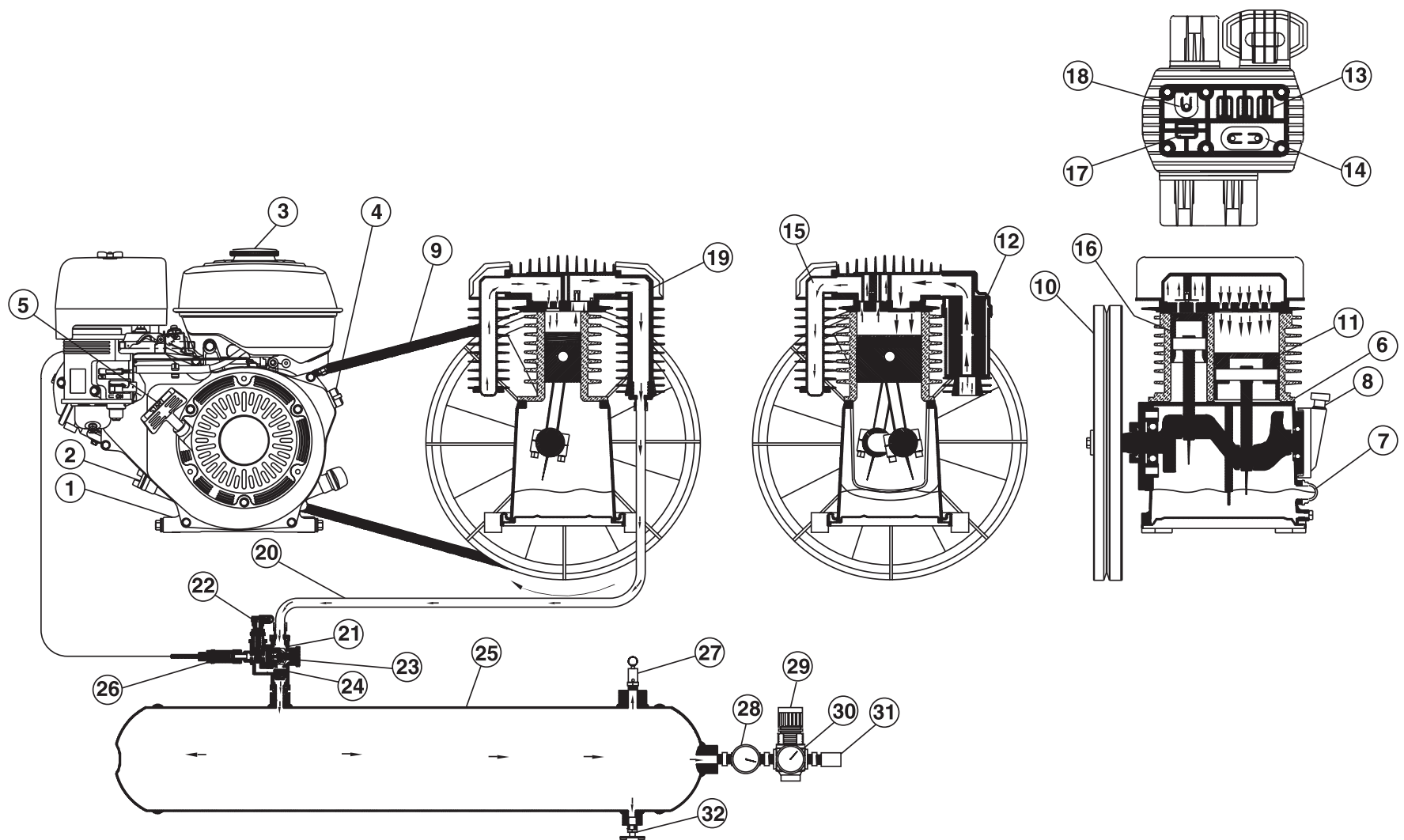
Table of Contents

| | |
|--|-----------|
| SPECIFICATIONS..... | 3 |
| FLOW CHART | 4 |
| GENERAL THEORY OF OPERATION | 5 |
| TANK ASSEMBLY FOR AM2-PH09-08M | 6 |
| TANK ASSEMBLY FOR AM2-PH09-20M | 8 |
| TANK ASSEMBLY FOR AM2-PH09-30M | 10 |
| TANK ASSEMBLY FOR AM2-PK95_PR09-08M | 12 |
| TANK ASSEMBLY FOR AM2-PR09-20M | 14 |
| TANK ASSEMBLY FOR AM2-PR09-30M | 16 |
| TANK ASSEMBLY FOR AM2-SH09-20M | 18 |
| TANK ASSEMBLY FOR AM2-SH09-30M | 20 |
| TANK ASSEMBLY FOR AM2-SR09-20M | 22 |
| TANK ASSEMBLY FOR AM2-SR09-30M | 24 |
| BASE MOUNT ASSEMBLY FOR AM2-SH09-B..... | 26 |
| TWO STAGE COMPRESSOR (3-0298) | 28 |
| PILOT VALVE (22-0270)..... | 30 |

SPECIFICATIONS

| MODEL NUMBER | AM2-(PH09, PR09, PK95)-08M | AM2-(PH09, PR09)-20M | AM2-(PH09, PR09)-30M | AM2-(SH09, SR09)-20M | AM2-(SH09, SR09)-30M | AM2-SH09-B |
|----------------------------|--|-------------------------|--------------------------|-------------------------|--------------------------|----------------------|
| Engine: | | | | | | |
| Model | GX270 / EX27 / CH395 | GX270 / EX27 | GX270 / EX27 | GX270 / EX27 | GX270 / EX27 | GX270 |
| Engine Type | 4 stroke, overhead valve, single cylinder (Honda, Kohler) / 4 stroke, overhead cam, single cylinder (Subaru) | | | | | |
| Oil Type | SAE 10W-30 | | | | | |
| Oil Capacity | 37 oz. / 35.5 oz. / 44.8 oz. | 37 oz. / 35.5 oz. | 37 oz. / 35.5 oz. | 37 oz. / 35.5 oz. | 37 oz. / 35.5 oz. | 37 oz. |
| Low Oil Protection | Oil Alert™ / Oil Sensor / Oil Sentry™ | Oil Alert™ / Oil Sensor | Oil Alert™ / Oil Sensor | Oil Alert™ / Oil Sensor | Oil Alert™ / Oil Sensor | Oil Alert™ |
| Fuel Type | Unleaded Gasoline 86 Octane Minimum | | | | | |
| Fuel Capacity | 1.4 Gallon / 1.6 Gallon / 1.8 Gallon | 1.4 Gallon / 1.6 Gallon | 1.4 Gallon / 1.6 Gallon | 1.4 Gallon / 1.6 Gallon | 1.4 Gallon / 1.6 Gallon | 1.4 Gallon |
| Starting | Recoil | Recoil | Recoil | Recoil | Recoil | Recoil |
| Engine RPM | 3500 | 3500 | 3500 | 3500 | 3500 | 3500 |
| Idle RPM | 2200-2400 | 2200-2400 | 2200-2400 | 2200-2400 | 2200-2400 | 2200-2400 |
| Compressor Pump: | | | | | | |
| Number of Cylinders | 2 | 2 | 2 | 2 | 2 | 2 |
| Compression Stages | 2 | 2 | 2 | 2 | 2 | 2 |
| First Stage Bore | 3.94" | 3.94" | 3.94" | 3.94" | 3.94" | 3.94" |
| Second Stage Bore | 2.17" | 2.17" | 2.17" | 2.17" | 2.17" | 2.17" |
| Stroke | 3.36" | 3.36" | 3.36" | 3.36" | 3.36" | 3.36" |
| RPM | 864 | 864 | 864 | 864 | 864 | 864 |
| Flywheel | 16.5" | 16.5" | 16.5" | 16.5" | 16.5" | 16.5" |
| Lubrication | Splash | Splash | Splash | Splash | Splash | Splash |
| Oil Quantity | 24.7 oz. | 24.7 oz. | 24.7 oz. | 24.7 oz. | 24.7 oz. | 24.7 oz. |
| Oil Type | 30 W Non Detergent | 30 W Non Detergent | 30 W Non Detergent | 30 W Non Detergent | 30 W Non Detergent | 30 W Non Detergent |
| Crankcase | Cast Iron | Cast Iron | Cast Iron | Cast Iron | Cast Iron | Cast Iron |
| Bearings | Ball | Ball | Ball | Ball | Ball | Ball |
| Cylinder | Cast Iron | Cast Iron | Cast Iron | Cast Iron | Cast Iron | Cast Iron |
| Valves | Reed | Reed | Reed | Reed | Reed | Reed |
| Head | Aluminum | Aluminum | Aluminum | Aluminum | Aluminum | Aluminum |
| Filter | Canister | Canister | Canister | Canister | Canister | Canister |
| Pilot Valve Setting: | | | | | | |
| Cut-out | 175 PSI | 175 PSI | 175 PSI | 175 PSI | 175 PSI | 175 PSI |
| Cut-in | 145 PSI | 145 PSI | 145 PSI | 145 PSI | 145 PSI | 145 PSI |
| AIR TANK: | | | | | | |
| Capacity | 8 gallons | 20 gallons | 30 gallons | 20 gallons | 30 gallons | - |
| PERFORMANCE: | | | | | | |
| CFM Air Displacement | 20.3 | 20.3 | 20.3 | 20.3 | 20.3 | 20.3 |
| CFM @ 40 PSI | 19.7 | 19.7 | 19.1 | 19.7 | 19.1 | 19.1 |
| CFM @ 100 PSI | 18.3 | 18.3 | 17.7 | 18.3 | 17.7 | 17.7 |
| CFM @ 175 PSI | 17.5 | 17.5 | 16.9 | 17.5 | 16.9 | 16.9 |
| Maximum Pressure | 175 PSI | 175 PSI | 175 PSI | 175 PSI | 175 PSI | 175 PSI |
| Pump-up Time: 0-175 PSI | 44 seconds | 1 minute and 46 seconds | 2 minutes and 50 seconds | 2 minute and 50 seconds | 2 minutes and 50 seconds | - |
| Recovery Time: 145-175 PSI | 9 seconds | 13 seconds | 20 seconds | 20 seconds | 20 seconds | - |
| WEIGHT: | | | | | | |
| Net | 288 lbs | 337 lbs | 374 lbs | 331 lbs | 368 lbs | 267 lbs |
| Shipping | 358 lbs | 387 lbs | 424 lbs | 381 lbs | 418 lbs | 317 lbs |
| DIMENSIONS: | | | | | | |
| Basic L x W x H | 44" x 26" x 33" | 46" x 26" x 41.5" | 46" x 27.5" x 45" | 37" x 18" x 40" | 40" x 18.5" x 43.5" | 35" x 21.25" x 25.5" |
| Shipping L x W x H | 48.5" x 30.5" x 40" | 47" x 32" x 48.5" | 47" x 37" x 48.5" | 47" x 32" x 48.5" | 47" x 32" x 48.5" | 47" x 37" x 47" |

FLOW CHART

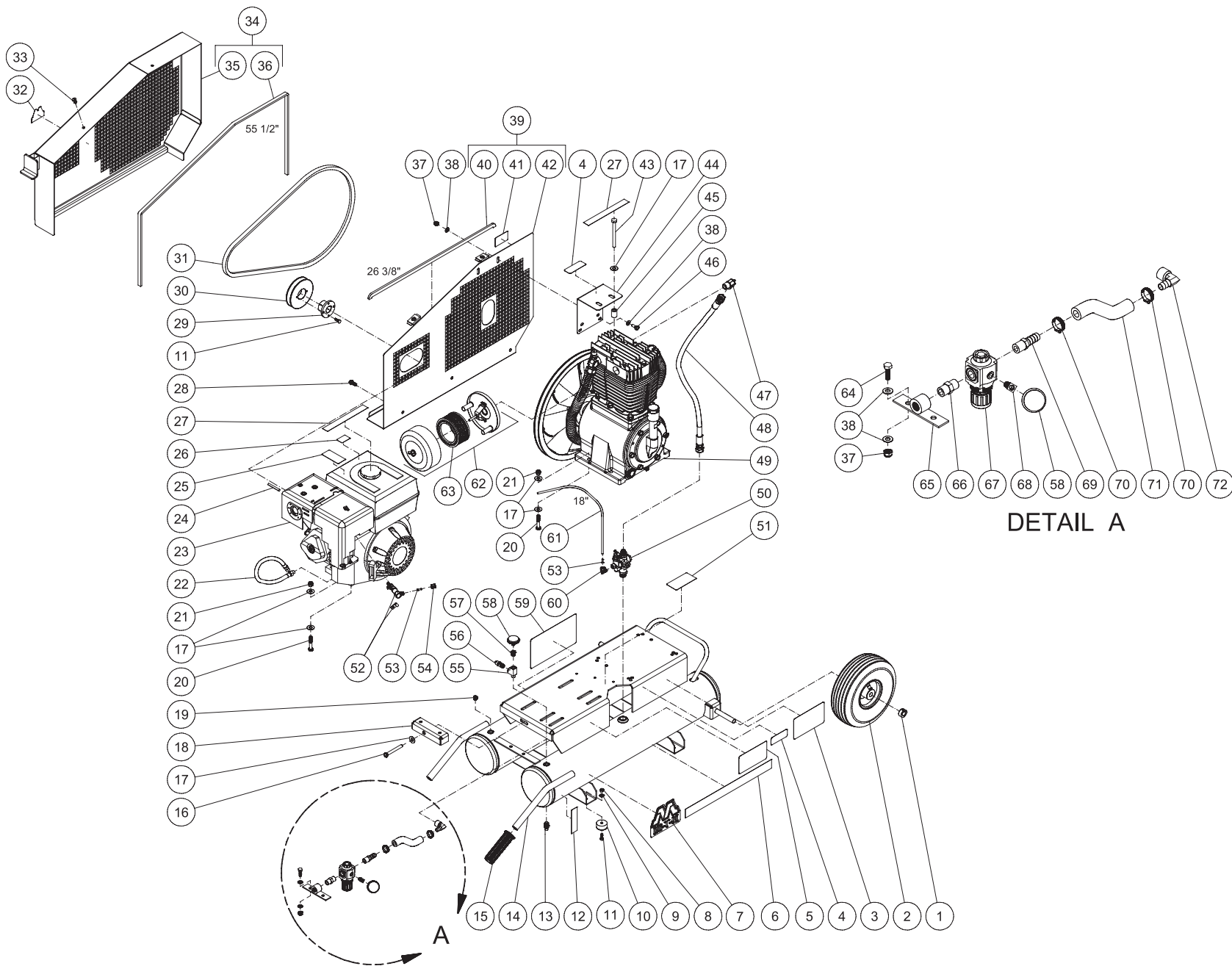


OMAC0051-102898-RD

GENERAL THEORY OF OPERATION

1. The **ENGINE (1)** supplies power to the air compressor.
 - a. The **ENGINE (1)** is lubricated by oil. The oil level should be checked before each use by removing the **ENGINE OIL DIPSTICK (2)**.
 - b. The **ENGINE (1)** runs on gasoline. The **FUEL TANK (3)** level should be checked before each use.
 - c. The **ENGINE ON/OFF SWITCH (4)** and **STARTER ROPE (5)** are used to start the engine.
 - d. Refer to engine owner's manual for appropriate starting procedures and requirements of the **ENGINE (1)**.
2. The **COMPRESSOR PUMP (6)** is lubricated by oil. The oil level should be checked before each use by viewing the **COMPRESSOR PUMP OIL SIGHTGLASS (7)**. If the oil level is low, add SAE-30W non-detergent oil to the **COMPRESSOR PUMP OIL FILL PORT (8)**.
3. When the unit is operating, the **V-BELT (9)** turns the **COMPRESSOR PUMP FLYWHEEL (10)** which rotates the crankshaft and moves the pistons.
4. As the **FIRST STAGE PISTON (11)** moves down, air is drawn in through the **INLET AIR FILTER (12)**. Then through the **FIRST STAGE INLET REED VALVES (13)** and into the first stage piston chamber. At the same time, the **FIRST STAGE OUTLET REED VALVES (14)** is closed. This allows air to fill the first stage piston chamber.
5. As the **FIRST STAGE PISTON (11)** moves upward, the **FIRST STAGE INLET REED VALVE (13)** closes. The **FIRST STAGE OUTLET REED VALVE (14)** opens allowing the compressed air to flow into the **INTERCOOLER (15)** and into the second stage.
6. As the **SECOND STAGE PISTON (16)** moves down, the first stage compressed air is drawn in the through the **SECOND STAGE INLET REED VALVES (17)** and into the second stage piston chamber. At the same time, the **SECOND STAGE OUTLET REED VALVES (18)** is closed.
7. As the **SECOND STAGE PISTON (16)** moves upward, the **SECOND STAGE INLET REED VALVES (17)** closes. The **SECOND STAGE OUTLET REED VALVES (18)** opens allowing the compressed air to flow into the **AFTERCOOLER (19)** and **DISCHARGE LINE (20)**.
8. The compressed air then enters the **PILOT CONTROL VALVE (21)** which has an **TOGGLE KNOB (22)** with two positions.
 - a. **Easy Start Position:** When the **TOGGLE KNOB (22)** is in the *open* position (*vertical*) air moves out the **PILOT VALVE MUFFLER (23)** allowing the **ENGINE (1)** to start under no-load conditions .
 - b. **Constant Run Position:** When the **TOGGLE KNOB (22)** is in the *closed* position (*horizontal*) the compressed air opens the **CHECK VALVE (24)** and moves into the **AIR TANK (25)**. When the pressure in the **AIR TANK (25)** reaches the maximum pressure setting of the **PILOT CONTROL VALVE (21)**, the excess air exits the **PILOT VALVE MUFFLER (23)** and the **CHECK VALVE (24)** will close. At the same time the **THROTTLE CONTROL (26)** allows the **ENGINE (1)** to idle down.
9. The **SAFETY RELIEF VALVE (27)** protects the system from any overpressure conditions.
10. The **TANK PRESSURE GAUGE (28)** indicates tank pressure. The **AIR PRESSURE REGULATOR (29)** can be adjusted to the desired operating pressure which is indicated on the **OUTLET PRESSURE GAUGE (30)**. The air exits through the **OUTLET FITTING (31)**.
11. The **ENGINE ON/OFF SWITCH (4)** stops the **ENGINE (1)** when moved to the "OFF" position.
12. When the **ENGINE (1)** is off, compressed air should be released from the **AIR TANK (25)** by opening the attached air tool or by pulling on the **SAFETY RELIEF VALVE (27)**. When the **TANK PRESSURE GAUGE (28)** registers less than 10 PSI, drain the condensation from the **AIR TANK (25)** by opening the **TANK DRAIN (32)**.

TANK ASSEMBLY FOR AM2-PH09-08M

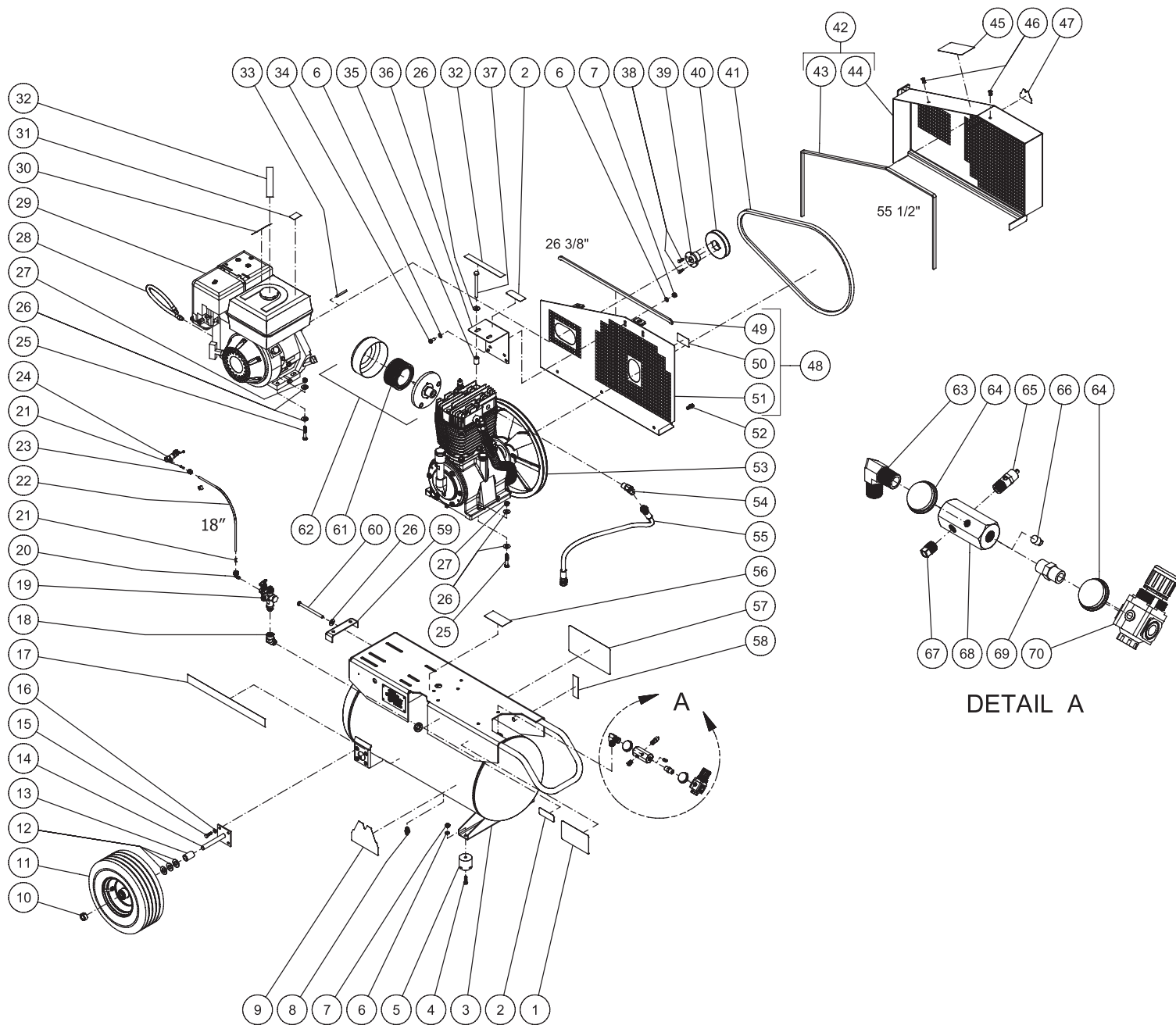


AM2-PH09-08M-030812-MLK

FRAME ASSEMBLY

| ITEM | DESCRIPTION | PART # | QTY | ITEM | DESCRIPTION | PART # | QTY |
|------|--|------------|-----|---------------------------------|--|------------|-----|
| 1 | COLLAR | 33-0351 | 2 | 38 | WASHER | 28-0003 | 8 |
| 2 | WHEEL | 14-0017 | 2 | 39 | BELTGUARD BACK ASSEMBLY (INC. 40-42) | 854-0066 | 1 |
| 3 | DECAL - MAINTENANCE INSTRUCTIONS (SEE 71-0086) | N/A | 1 | 40 | EDGING *(THREE FEET REQUIRED) | 33-0020 | 1 |
| 4 | DECAL - RISK OF BURNS (SEE 71-0086) | N/A | 2 | 41 | DECAL - BELTGUARD IN PLACE (SEE 71-0086) | N/A | 1 |
| 5 | DECAL - OPERATING INSTRUCTIONS (SEE 71-0086) | N/A | 1 | 42 | BELTGUARD BACK | 6-0093A01 | 1 |
| 6 | DECAL - STRIPE | 34-2188 | 1 | 43 | BOLT | 27-8071 | 2 |
| 7 | DECAL - Mi-T-M | 34-2169 | 1 | 44 | BRACKET | 13-0189A01 | 1 |
| 8 | LOCKNUT | 30-0155 | 2 | 45 | SPACER | 33-0425 | 2 |
| 9 | WASHER | 28-0002 | 2 | 46 | BOLT | 27-0066 | 2 |
| 10 | ISOLATOR | 14-0069 | 2 | 47 | ELBOW | 24-0074 | 1 |
| 11 | BOLT | 27-0015 | 4 | 48 | HOSE | 15-0243 | 1 |
| 12 | DECAL - TANK DRAIN (SEE 71-0086) | N/A | 2 | 49 | PUMP | 3-0298 | 1 |
| 13 | PETCOCK | 23-0312 | 2 | 50 | PILOT VALVE | 22-0270 | 1 |
| 14 | AIR TANK ASSEMBLY | 12-0151A01 | 1 | 51 | DECAL- SILVER STICKER | N/A | 1 |
| 15 | HANDLE GRIP | 7-0059 | 2 | 52 | THROTTLE CONTROL | 854-0092 | 1 |
| 16 | BOLT | 27-0576 | 1 | 53 | TUBE SUPPORT | 23-0486 | 2 |
| 17 | WASHER | 28-0023 | 19 | 54 | NUT | 23-0315 | 1 |
| 18 | TIGHTENER BRACKET | 20-0650A01 | 1 | 55 | TEE | 23-0127 | 1 |
| 19 | PLUG | 23-0296 | 1 | 56 | PRESSURE RELIEF VALVE | 22-0267 | 1 |
| 20 | BOLT | 27-0121 | 8 | 57 | REDUCER | 23-0111 | 1 |
| 21 | LOCKNUT | 30-0159 | 8 | 58 | PRESSURE GAUGE | 22-0271 | 2 |
| 22 | OIL DRAIN HOSE | 70-0358 | 1 | 59 | DECAL - CAUTION/WARNING/DANGER (SEE 71-0086) | N/A | 1 |
| 23 | ENGINE | 1-0065 | 1 | 60 | ELBOW | 23-0316 | 1 |
| 24 | KEY | 43-0078 | 1 | 61 | HOSE *(TWO FEET REQUIRED) | 15-0238 | 1 |
| 25 | DECAL - MUFFLER HOT (SEE 71-0086) | N/A | 1 | 62 | FILTER CANISTER | 19-0237 | 1 |
| 26 | DECAL - ENGINE FUEL (SEE 71-0086) | N/A | 1 | 63 | AIR FILTER | 19-0226 | 1 |
| 27 | DECAL - CHECK OIL (SEE 71-0086) | N/A | 2 | 64 | BOLT | 27-0067 | 2 |
| 28 | BOLT | 27-9524 | 3 | 65 | REGULATOR MOUNTING BRACKET | 20-0421A01 | 1 |
| 29 | BUSHING | 9-0005 | 1 | 66 | NIPPLE | 24-0010 | 1 |
| 30 | SHEAVE | 10-0039 | 1 | 67 | REGULATOR | 22-0231 | 1 |
| 31 | BELT | 11-0066 | 1 | 68 | ELBOW | 23-0133 | 1 |
| 32 | DECAL - Mi-T-M | 34-2167 | 1 | 69 | HOSE BARB | 23-0105 | 1 |
| 33 | FASTENER | 33-0197 | 2 | 70 | HOSE CLAMP | 42-0011 | 2 |
| 34 | BELTGUARD COVER ASSEMBLY (INC. 35-36) | 854-0067 | 1 | 71 | HOSE *(ONE FOOT REQUIRED) | 15-0007 | 1 |
| 35 | BELTGUARD FRONT | 6-0094A01 | 1 | 72 | HOSE BARB | 23-0418 | 1 |
| 36 | EDGING *(FIVE FEET REQUIRED) | 33-0020 | 1 | - | DECAL SET | 71-0086 | 1 |
| 37 | LOCKNUT | 30-0157 | 4 | *MUST ORDER IN ONE FOOT LENGTHS | | | |

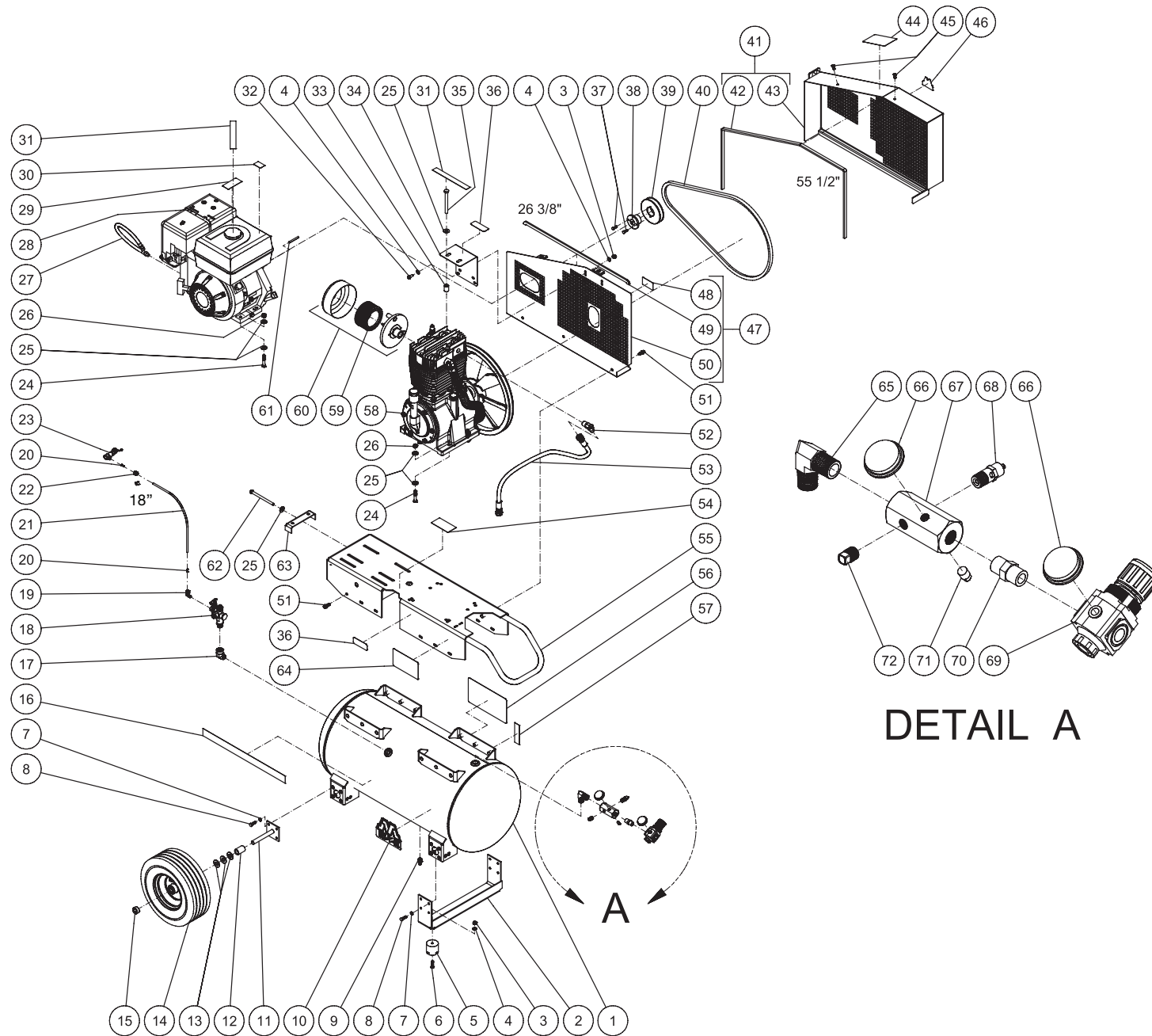
TANK ASSEMBLY FOR AM2-PH09-20M



AM2-PH09-20M-030812-MLK

| AM2-PH09-20M TANK ASSEMBLY | | | | | | | |
|----------------------------|--|------------|-----|------|--|------------|-----|
| ITEM | DESCRIPTION | PART # | QTY | ITEM | DESCRIPTION | PART # | QTY |
| 1 | DECAL - MAINTENANCE INSTRUCTIONS (SEE 71-0086) | N/A | 1 | 37 | BOLT | 27-8071 | 2 |
| 2 | DECAL - RISK OF BURNS (SEE 71-0086) | N/A | 2 | 38 | BOLT | 27-0015 | 2 |
| 3 | TANK | 12-0191A01 | 1 | 39 | BUSHING | 9-0005 | 1 |
| 4 | BOLT | 27-0068 | 2 | 40 | SHEAVE | 10-0039 | 1 |
| 5 | ISOLATOR | 14-0008 | 2 | 41 | BELT | 11-0062 | 1 |
| 6 | WASHER | 28-0003 | 6 | 42 | BELTGUARD COVER ASSEMBLY | 854-0067 | 1 |
| 7 | LOCKNUT | 30-0157 | 4 | 43 | EDGING (FIVE FEET REQUIRED) | 33-0020 | 1 |
| 8 | PETCOCK | 23-0312 | 1 | 44 | BELTGUARD FRONT | 6-0094A01 | 1 |
| 9 | DECAL - Mi-T-M | 34-2169 | 1 | 45 | DECAL - OPERATING INSTRUCTIONS (SEE 71-0086) | N/A | 1 |
| 10 | COLLAR | 33-0351 | 2 | 46 | FASTENER | 33-0197 | 2 |
| 11 | WHEEL | 14-0006 | 2 | 47 | DECAL - Mi-T-M | 34-2167 | 1 |
| 12 | WASHER | 28-0008 | 6 | 48 | BELTGUARD BACK ASSEMBLY | 854-0066 | 1 |
| 13 | SPACER | 62-0176 | 2 | 49 | EDGING (THREE FEET REQUIRED) | 33-0020 | 1 |
| 14 | AXLE | 20-0670A01 | 2 | 50 | DECAL - BELTGUARD IN PLACE (SEE 71-0086) | N/A | 1 |
| 15 | BOLT | 27-0067 | 8 | 51 | BELTGUARD BACK | 6-0093A01 | 1 |
| 16 | LOCKWASHER | 29-0007 | 8 | 52 | BOLT | 27-9524 | 3 |
| 17 | DECAL - STRIPE | 34-2188 | 1 | 53 | PUMP | 3-0298 | 1 |
| 18 | ELBOW | 24-0041 | 1 | 54 | ELBOW | 24-0074 | 1 |
| 19 | PILOT VALVE | 22-0270 | 1 | 55 | HOSE | 15-0243 | 1 |
| 20 | ELBOW | 23-0316 | 1 | 56 | DECAL- SILVER STICKER | N/A | 1 |
| 21 | TUBE SUPPORT | 23-0486 | 2 | 57 | DECAL - CAUTION/WARNING/DANGER (SEE 71-0086) | N/A | 1 |
| 22 | HOSE *(TWO FEET REQUIRED) | 15-0238 | 1 | 58 | DECAL - TANK DRAIN (SEE 71-0086) | N/A | 1 |
| 23 | NUT | 23-0315 | 1 | 59 | TIGHTENER BRACKET | 20-0650A01 | 1 |
| 24 | THROTTLE CONTROL | 33-0413 | 1 | 60 | BOLT | 27-0133 | 1 |
| 25 | BOLT | 27-0121 | 8 | 61 | AIR FILTER | 19-0226 | 1 |
| 26 | WASHER | 28-0023 | 19 | 62 | FILTER CANISTER | 19-0237 | 1 |
| 27 | LOCKNUT | 30-0159 | 8 | 63 | ELBOW | 24-0267 | 1 |
| 28 | OIL DRAIN HOSE | 70-0358 | 1 | 64 | PRESSURE GAUGE | 22-0271 | 2 |
| 29 | ENGINE | 1-0065 | 1 | 65 | PRESSURE RELIEF VALVE | 22-0267 | 1 |
| 30 | DECAL - MUFFLER HOT (SEE 71-0086) | N/A | 1 | 66 | PLUG | 24-0082 | 1 |
| 31 | DECAL - ENGINE FUEL (SEE 71-0086) | N/A | 1 | 67 | PLUG | 24-0009 | 1 |
| 32 | DECAL - CHECK OIL (SEE 71-0086) | N/A | 2 | 68 | MANIFOLD | 24-0266 | 1 |
| 33 | KEY | 43-0078 | 1 | 69 | NIPPLE | 24-0010 | 1 |
| 34 | BOLT | 27-0066 | 2 | 70 | REGULATOR | 22-0231 | 1 |
| 35 | SPACER | 33-0425 | 2 | - | DECAL SET | 71-0086 | 1 |
| 36 | BRACKET | 13-0189A01 | 1 | | | | |

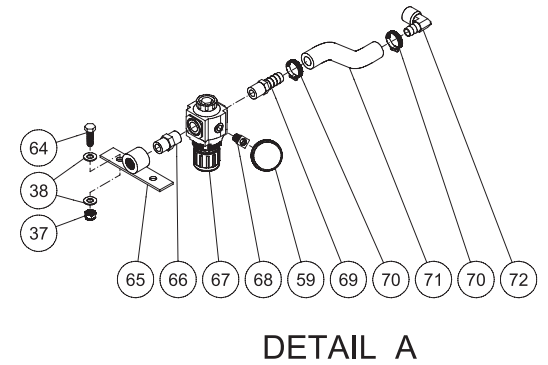
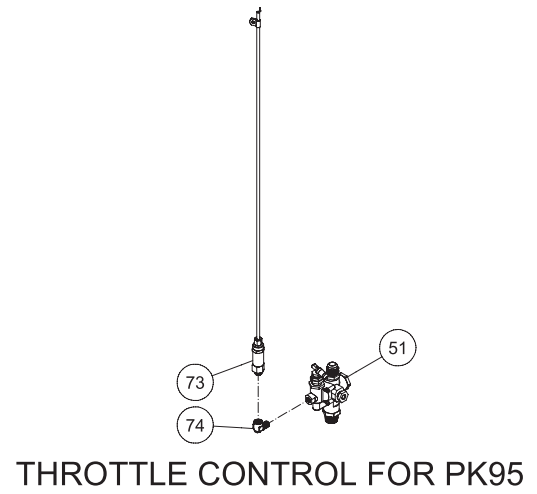
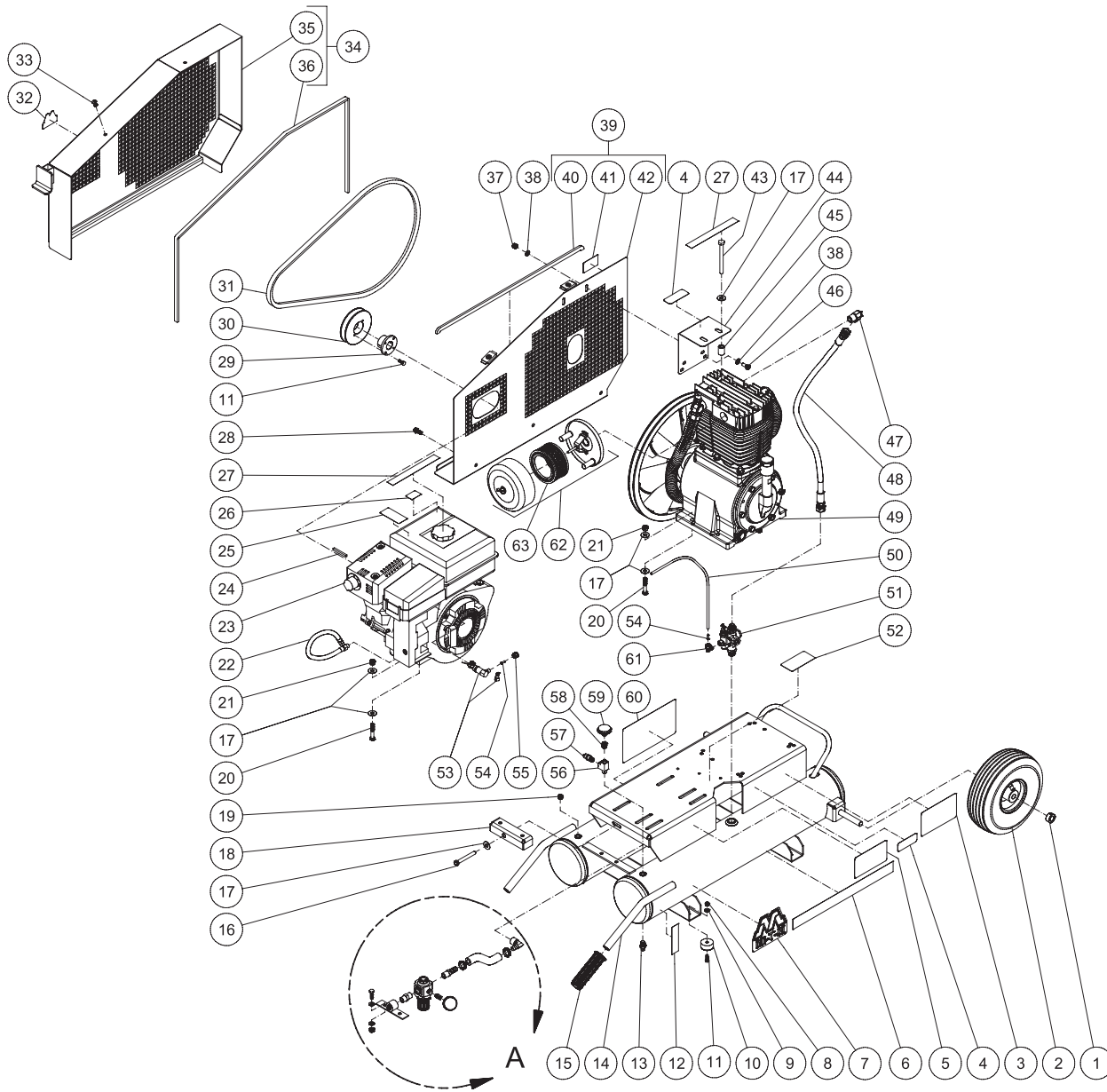
TANK ASSEMBLY FOR AM2-PH09-30M



AM2-PH09-30M-030812-MLK

| AM2-PH09-30M TANK ASSEMBLY | | | | | | | |
|----------------------------|-------------------------------------|------------|-----|---------------------------------|--|------------|-----|
| ITEM | DESCRIPTION | PART # | QTY | ITEM | DESCRIPTION | PART # | QTY |
| 1 | TANK | 12-0193A01 | 1 | 38 | BUSHING | 9-0005 | 1 |
| 2 | SUPPORT FOOT BRACKET | 20-0671A01 | 1 | 39 | SHEAVE | 10-0039 | 1 |
| 3 | LOCKNUT | 30-0157 | 4 | 40 | BELT | 11-0066 | 1 |
| 4 | WASHER | 28-0003 | 6 | 41 | BELTGUARD COVER ASSEMBLY | 854-0067 | 1 |
| 5 | ISOLATOR | 14-0008 | 2 | 42 | EDGING *(FIVE FEET REQUIRED) | 33-0020 | 1 |
| 6 | BOLT | 27-0068 | 2 | 43 | BELTGUARD FRONT | N/A | 1 |
| 7 | LOCKWASHER | 29-0007 | 16 | 44 | DECAL - OPERATING INSTRUCTIONS (SEE 71-0086) | N/A | 1 |
| 8 | BOLT | 27-0067 | 16 | 45 | FASTENER | 33-0197 | 2 |
| 9 | PETCOCK | 23-0312 | 1 | 46 | DECAL - Mi-T-M | 34-2167 | 1 |
| 10 | DECAL - Mi-T-M | 34-2169 | 1 | 47 | BELTGUARD BACK ASSEMBLY | 854-0066 | 1 |
| 11 | AXLE | 20-0670A01 | 2 | 48 | DECAL - BELTGUARD IN PLACE (SEE 71-0086) | N/A | 1 |
| 12 | SPACER | 62-0176 | 2 | 49 | EDGING *(THREE FEET REQUIRED) | 33-0020 | 1 |
| 13 | WASHER | 28-0008 | 6 | 50 | BELTGUARD BACK | N/A | 1 |
| 14 | WHEEL | 14-0006 | 2 | 51 | BOLT | 27-9524 | 15 |
| 15 | COLLAR | 33-0351 | 2 | 52 | ELBOW | 24-0074 | 1 |
| 16 | DECAL - Mi-T-M STRIPE | 34-2189 | 1 | 53 | HOSE | 15-0243 | 1 |
| 17 | ELBOW | 24-0041 | 1 | 54 | DECAL- SILVER STICKER | N/A | 1 |
| 18 | PILOT VALVE | 22-0270 | 1 | 55 | BASEPLATE | 5-0198A01 | 1 |
| 19 | ELBOW | 23-0316 | 1 | 56 | DECAL - CAUTION/WARNING/DANGER (SEE 71-0086) | N/A | 1 |
| 20 | TUBE SUPPORT | 23-0486 | 2 | 57 | DECAL - TANK DRAIN (SEE 71-0086) | N/A | 1 |
| 21 | HOSE *(TWO FEET REQUIRED) | 15-0238 | 1 | 58 | PUMP | 3-0298 | 1 |
| 22 | NUT | 23-0315 | 1 | 59 | AIR FILTER | 19-0226 | 1 |
| 23 | THROTTLE CONTROL | 33-0413 | 1 | 60 | FILTER CANISTER | 19-0237 | 1 |
| 24 | BOLT | 27-0121 | 8 | 61 | KEY | 43-0078 | 1 |
| 25 | WASHER | 28-0023 | 19 | 62 | BOLT | 27-0133 | 1 |
| 26 | LOCKNUT | 30-0159 | 8 | 63 | TIGHTENER BRACKET | 20-0650A01 | 1 |
| 27 | OIL DRAIN HOSE | 70-0358 | 1 | 64 | DECAL - MAINTENANCE INSTRUCTIONS (SEE 71-0086) | N/A | 1 |
| 28 | ENGINE | 1-0065 | 1 | 65 | ELBOW | 24-0267 | 1 |
| 29 | DECAL - MUFFLER HOT (SEE 71-0086) | N/A | 1 | 66 | PRESSURE GAUGE | 22-0271 | 2 |
| 30 | DECAL - ENGINE FUEL (SEE 71-0086) | N/A | 1 | 67 | MANIFOLD | 24-0266 | 1 |
| 31 | DECAL - CHECK OIL (SEE 71-0086) | N/A | 2 | 68 | PRESSURE RELIEF VALVE | 22-0267 | 1 |
| 32 | BOLT | 27-0066 | 2 | 69 | REGULATOR | 22-0231 | 1 |
| 33 | SPACER | 33-0425 | 2 | 70 | NIPPLE | 24-0010 | 1 |
| 34 | BRACKET | 13-0189A01 | 1 | 71 | PLUG | 24-0082 | 1 |
| 35 | BOLT | 27-8071 | 2 | 72 | PLUG | 24-0009 | 1 |
| 36 | DECAL - RISK OF BURNS (SEE 71-0086) | N/A | 2 | - | DECAL SET | 71-0086 | 1 |
| 37 | BOLT | 27-0015 | 2 | *MUST ORDER IN ONE FOOT LENGTHS | | | |

TANK ASSEMBLY FOR AM2-PK95_PR09-08M

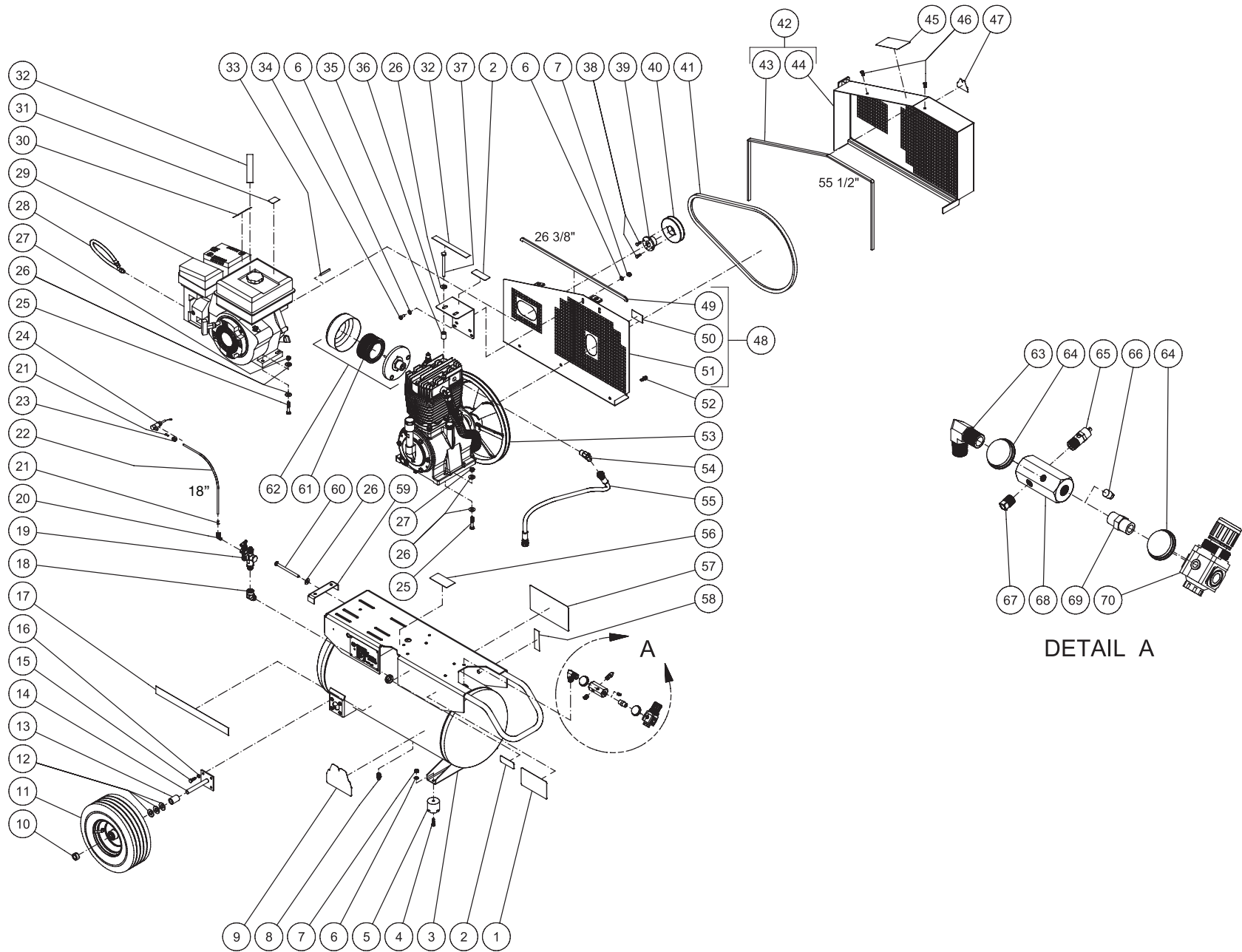


AM2-PK95_PR09-08M-020912-MLK

FRAME ASSEMBLY

| ITEM | DESCRIPTION | PART # | QTY | ITEM | DESCRIPTION | PART # | QTY |
|------|--|------------|-----|------|--|------------|-----|
| 1 | COLLAR | 33-0351 | 2 | 38 | WASHER | 28-0003 | 8 |
| 2 | WHEEL | 14-0017 | 2 | 39 | BELTGUARD BACK ASSEMBLY (INC. 40-42) | 854-0066 | 1 |
| 3 | DECAL - MAINTENANCE INSTRUCTIONS (SEE 71-0078) | N/A | 1 | 40 | EDGING *(THREE FEET REQUIRED) | 33-0020 | 1 |
| 4 | DECAL - RISK OF BURNS (SEE 71-0078) | N/A | 2 | 41 | DECAL - BELTGUARD IN PLACE (SEE 71-0078) | N/A | 1 |
| 5 | DECAL - OPERATING INSTRUCTIONS (SEE 71-0078) | N/A | 1 | 42 | BELTGUARD BACK | 6-0093A01 | 1 |
| 6 | DECAL - STRIPE | 34-2188 | 1 | 43 | BOLT | 27-8071 | 2 |
| 7 | DECAL - Mi-T-M | 34-2169 | 1 | 44 | BRACKET | 13-0189A01 | 1 |
| 8 | LOCKNUT | 30-0155 | 2 | 45 | SPACER | 33-0425 | 2 |
| 9 | WASHER | 28-0002 | 2 | 46 | BOLT | 27-0066 | 2 |
| 10 | ISOLATOR | 14-0069 | 2 | 47 | ELBOW | 24-0074 | 1 |
| 11 | BOLT | 27-0015 | 4 | 48 | HOSE | 15-0243 | 1 |
| 12 | DECAL - TANK DRAIN (SEE 71-0078) | N/A | 2 | 49 | PUMP | 3-0298 | 1 |
| 13 | PETCOCK | 23-0312 | 2 | 50 | HOSE *(TWO FEET REQUIRED) (AM2-PR09) | 15-0238 | 1 |
| 14 | AIR TANK ASSEMBLY | 12-0151A01 | 1 | 51 | PILOT VALVE | 22-0270 | 1 |
| 15 | HANDLE GRIP | 7-0059 | 2 | 52 | DECAL - SILVER STICKER | N/A | 1 |
| 16 | BOLT | 27-0576 | 1 | 53 | AIR THROTTLE CONTROL (AM2-PR09) | 854-0091 | 1 |
| 17 | WASHER | 28-0023 | 19 | 54 | TUBE SUPPORT (AM2-PR09) | 23-0486 | 2 |
| 18 | TIGHTENER BRACKET | 20-0650A01 | 1 | 55 | NUT (AM2-PR09) | 23-0315 | 1 |
| 19 | PLUG | 23-0296 | 1 | 56 | TEE | 23-0127 | 1 |
| 20 | BOLT | 27-0121 | 8 | 57 | PRESSURE RELIEF VALVE | 22-0267 | 1 |
| 21 | LOCKNUT | 30-0159 | 8 | 58 | REDUCER | 23-0111 | 1 |
| 22 | HOSE | 70-0380 | 1 | 59 | PRESSURE GAUGE | 22-0271 | 2 |
| 23 | ENGINE - SUBARU (AM2-PR09) | 1-0134 | 1 | 60 | DECAL - CAUTION/WARNING/DANGER (SEE 71-0078) | N/A | 1 |
| - | ENGINE - KOHLER (AM2-PK95) | 1-0207 | 1 | 61 | ELBOW (AM2-PR09) | 23-0316 | 1 |
| 24 | KEY | 43-0078 | 1 | 62 | FILTER CANISTER | 19-0237 | 1 |
| 25 | DECAL - MUFFLER HOT (SEE 71-0078) | N/A | 1 | 63 | AIR FILTER | 19-0226 | 1 |
| 26 | DECAL - ENGINE FUEL (SEE 71-0078) | N/A | 1 | 64 | BOLT | 27-0067 | 2 |
| 27 | DECAL - CHECK OIL (SEE 71-0078) | N/A | 2 | 65 | REGULATOR MOUNTING BRACKET | 20-0421A01 | 1 |
| 28 | BOLT | 27-9524 | 3 | 66 | NIPPLE | 24-0010 | 1 |
| 29 | BUSHING | 9-0005 | 1 | 67 | REGULATOR | 22-0231 | 1 |
| 30 | SHEAVE | 10-0039 | 1 | 68 | ELBOW | 23-0133 | 1 |
| 31 | BELT | 11-0066 | 1 | 69 | HOSE BARB | 23-0105 | 1 |
| 32 | DECAL - Mi-T-M | 34-2167 | 1 | 70 | HOSE CLAMP | 42-0011 | 2 |
| 33 | FASTENER | 33-0197 | 2 | 71 | HOSE | 15-0007 | 1 |
| 34 | BELTGUARD COVER ASSEMBLY (INC. 35-36) | 854-0067 | 1 | 72 | HOSE BARB | 23-0418 | 1 |
| 35 | BELTGUARD FRONT | 6-0094A01 | 1 | 73 | AIR THROTTLE (AM2-PK95) | 33-0294 | 1 |
| 36 | EDGING *(FIVE FEET REQUIRED) | 33-0020 | 1 | 74 | ELBOW (AM2-PK95) | 23-0118 | 1 |
| 37 | LOCKNUT | 30-0157 | 4 | - | DECAL SET | 71-0078 | 1 |

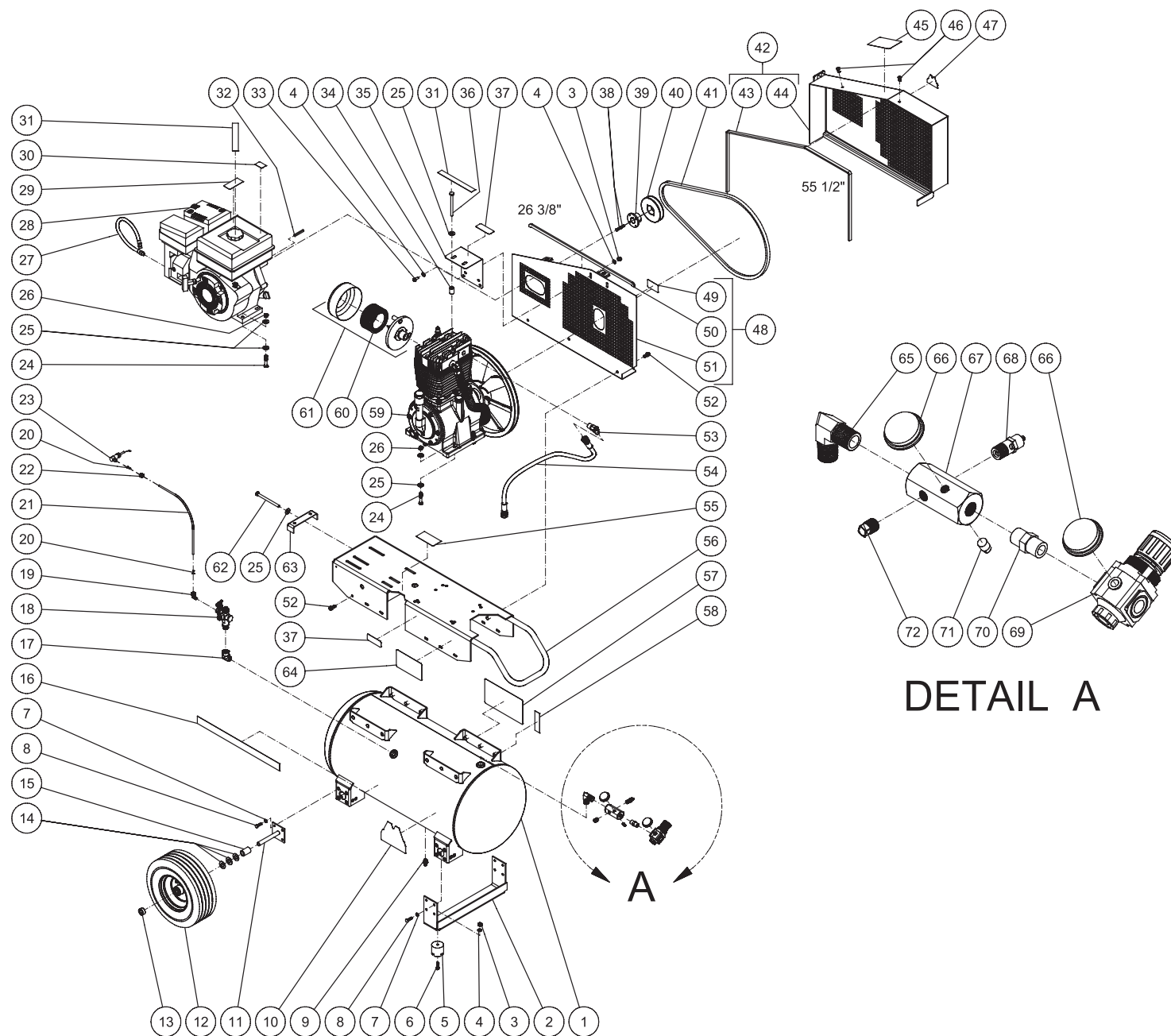
TANK ASSEMBLY FOR AM2-PR09-20M



AM2-PR09-20M-030812-MLK

| AM2-PR09-20M TANK ASSEMBLY | | | | | | | |
|----------------------------|--|------------|-----|------|--|------------|-----|
| ITEM | DESCRIPTION | PART # | QTY | ITEM | DESCRIPTION | PART # | QTY |
| 1 | DECAL - MAINTENANCE INSTRUCTIONS (SEE 71-0086) | N/A | 1 | 37 | BOLT | 27-8071 | 2 |
| 2 | DECAL - RISK OF BURNS (SEE 71-0086) | N/A | 2 | 38 | BOLT | 27-0015 | 2 |
| 3 | TANK | 12-0191A01 | 1 | 39 | BUSHING | 9-0005 | 1 |
| 4 | BOLT | 27-0068 | 2 | 40 | SHEAVE | 10-0039 | 1 |
| 5 | ISOLATOR | 14-0008 | 2 | 41 | BELT | 11-0062 | 1 |
| 6 | WASHER | 28-0003 | 6 | 42 | BELTGUARD COVER ASSEMBLY | 854-0067 | 1 |
| 7 | LOCKNUT | 30-0157 | 4 | 43 | EDGING (FIVE FEET REQUIRED) | 33-0020 | 1 |
| 8 | PETCOCK | 23-0312 | 1 | 44 | BELTGUARD FRONT | 6-0094A01 | 1 |
| 9 | DECAL - Mi-T-M | 34-2169 | 1 | 45 | DECAL - OPERATING INSTRUCTIONS (SEE 71-0086) | N/A | 1 |
| 10 | COLLAR | 33-0351 | 2 | 46 | FASTENER | 33-0197 | 2 |
| 11 | WHEEL | 14-0006 | 2 | 47 | DECAL - MI-T-M | 34-2167 | 1 |
| 12 | WASHER | 28-0008 | 6 | 48 | BELTGUARD BACK ASSEMBLY | 854-0066 | 1 |
| 13 | SPACER | 62-0176 | 2 | 49 | EDGING (THREE FEET REQUIRED) | 33-0020 | 1 |
| 14 | AXLE | 20-0670A01 | 2 | 50 | DECAL - BELTGUARD IN PLACE (SEE 71-0086) | N/A | 1 |
| 15 | BOLT | 27-0067 | 8 | 51 | BELTGUARD BACK | 6-0093A01 | 1 |
| 16 | LOCKWASHER | 29-0007 | 8 | 52 | BOLT | 27-9524 | 3 |
| 17 | DECAL - STRIPE | 34-2188 | 1 | 53 | PUMP | 3-0298 | 1 |
| 18 | ELBOW | 24-0041 | 1 | 54 | ELBOW | 24-0074 | 1 |
| 19 | PILOT VALVE | 22-0270 | 1 | 55 | HOSE | 15-0243 | 1 |
| 20 | ELBOW | 23-0316 | 1 | 56 | DECAL- SILVER STICKER | N/A | 1 |
| 21 | TUBE SUPPORT | 23-0486 | 2 | 57 | DECAL - CAUTION/WARNING/DANGER (SEE 71-0086) | N/A | 1 |
| 22 | HOSE *(TWO FEET REQUIRED) | 15-0238 | 1 | 58 | DECAL - TANK DRAIN (SEE 71-0086) | N/A | 1 |
| 23 | NUT | 23-0315 | 1 | 59 | TIGHTENER BRACKET | 20-0650A01 | 1 |
| 24 | AIR THROTTLE CONTROL | 33-0394 | 1 | 60 | BOLT | 27-0133 | 1 |
| 25 | BOLT | 27-0121 | 8 | 61 | AIR FILTER | 19-0226 | 1 |
| 26 | WASHER | 28-0023 | 19 | 62 | FILTER CANISTER | 19-0237 | 1 |
| 27 | LOCKNUT | 30-0159 | 8 | 63 | ELBOW | 24-0267 | 1 |
| 28 | OIL DRAIN HOSE | 70-0358 | 1 | 64 | PRESSURE GAUGE | 22-0271 | 2 |
| 29 | ENGINE | 1-0134 | 1 | 65 | PRESSURE RELIEF VALVE | 22-0267 | 1 |
| 30 | DECAL - MUFFLER HOT (SEE 71-0086) | N/A | 1 | 66 | PLUG | 24-0082 | 1 |
| 31 | DECAL - ENGINE FUEL (SEE 71-0086) | N/A | 1 | 67 | PLUG | 24-0009 | 1 |
| 32 | DECAL - CHECK OIL (SEE 71-0086) | N/A | 2 | 68 | MANIFOLD | 24-0266 | 1 |
| 33 | KEY | 43-0078 | 1 | 69 | NIPPLE | 24-0010 | 1 |
| 34 | BOLT | 27-0066 | 2 | 70 | REGULATOR | 22-0231 | 1 |
| 35 | SPACER | 33-0425 | 2 | - | DECAL SET | 71-0086 | 1 |
| 36 | BRACKET | 13-0189A01 | 1 | | | | |

TANK ASSEMBLY FOR AM2-PR09-30M

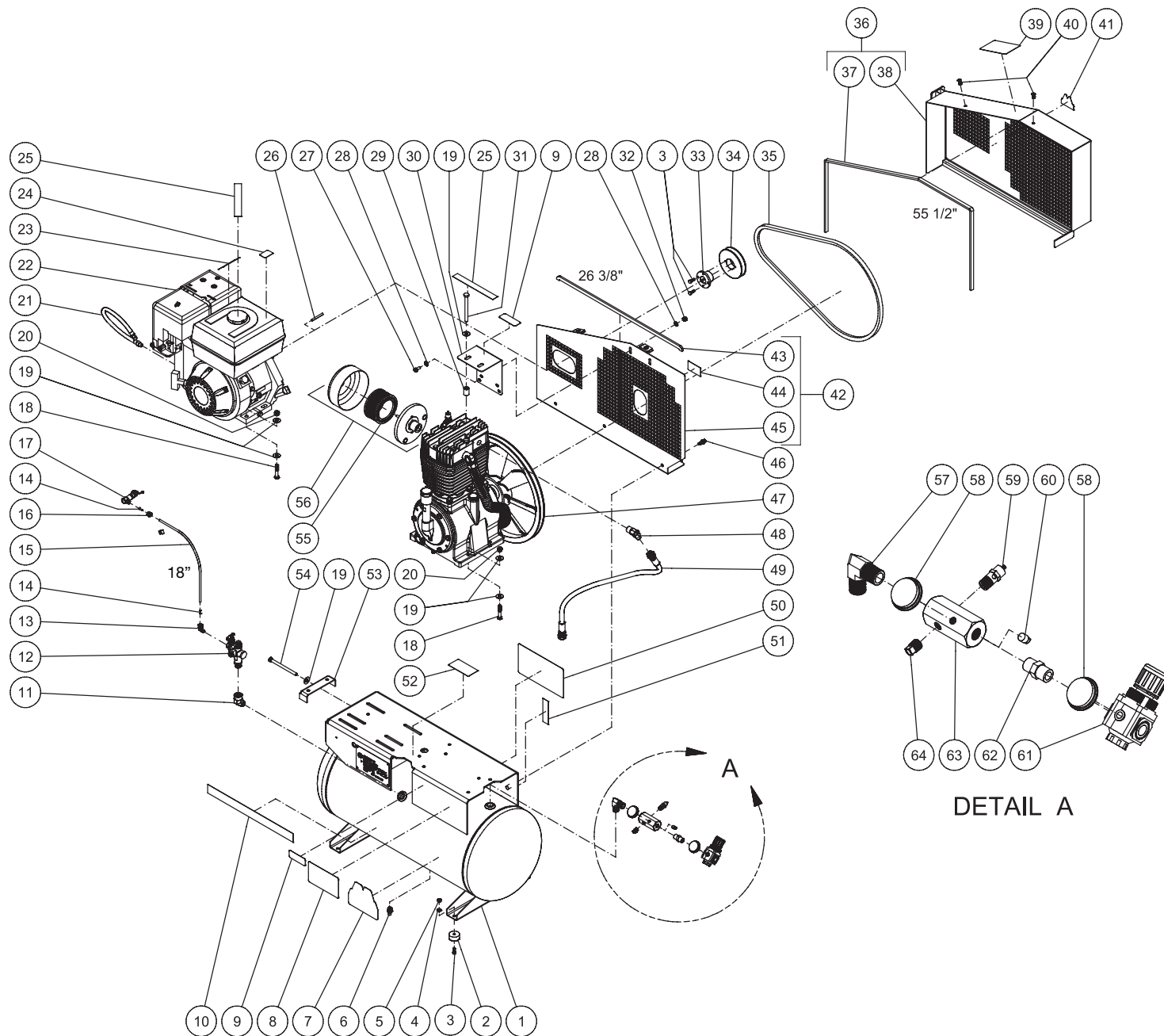


DETAIL A

AM2-PR09-30M-030912-MLK

| | | | | AM2-PR09-30M 030912-MLK | | | |
|----------------------------|-------------------------------------|------------|-----|-------------------------|--|------------|-----|
| AM2-PR09-30M TANK ASSEMBLY | | | | | | | |
| ITEM | DESCRIPTION | PART # | QTY | ITEM | DESCRIPTION | PART # | QTY |
| 1 | TANK | 12-0193A01 | 1 | 38 | BOLT | 27-0015 | 2 |
| 2 | SUPPORT FOOT BRACKET | 20-0671A01 | 1 | 39 | BUSHING | 9-0005 | 1 |
| 3 | LOCKNUT | 30-0157 | 4 | 40 | SHEAVE | 10-0039 | 1 |
| 4 | WASHER | 28-0003 | 6 | 41 | BELT | 11-0066 | 1 |
| 5 | ISOLATOR | 14-0008 | 2 | 42 | BELTGUARD COVER ASSEMBLY | 854-0067 | 1 |
| 6 | BOLT | 27-0068 | 2 | 43 | EDGING (FIVE FEET REQUIRED) | 33-0020 | 1 |
| 7 | LOCKWASHER | 29-0007 | 16 | 44 | BELTGUARD FRONT | 6-0094A01 | 1 |
| 8 | BOLT | 27-0067 | 16 | 45 | DECAL - OPERATING INSTRUCTIONS (SEE 71-0086) | N/A | 1 |
| 9 | PETCOCK | 23-0312 | 1 | 46 | FASTENER | 33-0197 | 2 |
| 10 | DECAL - Mi-T-M | 34-2169 | 1 | 47 | DECAL - Mi-T-M | 34-2167 | 1 |
| 11 | AXLE | 20-0670A01 | 2 | 48 | BELTGUARD BACK ASSEMBLY | 854-0066 | 1 |
| 12 | WHEEL | 14-0006 | 2 | 49 | DECAL - BELTGUARD IN PLACE (SEE 71-0086) | N/A | 1 |
| 13 | COLLAR | 33-0351 | 2 | 50 | EDGING (THREE FEET REQUIRED) | 33-0020 | 1 |
| 14 | WASHER | 28-0008 | 6 | 51 | BELTGUARD BACK | 6-0093A01 | 1 |
| 15 | SPACER | 62-0176 | 2 | 52 | BOLT | 27-9524 | 15 |
| 16 | DECAL - STRIPE | 34-2189 | 1 | 53 | ELBOW | 24-0074 | 1 |
| 17 | ELBOW | 24-0041 | 1 | 54 | HOSE | 15-0243 | 1 |
| 18 | PILOT VALVE | 22-0270 | 1 | 55 | DECAL- SILVER STICKER | N/A | 1 |
| 19 | ELBOW | 23-0316 | 1 | 56 | BASEPLATE | 5-0198A01 | 1 |
| 20 | TUBE SUPPORT | 23-0486 | 2 | 57 | DECAL - CAUTION/WARNING/DANGER (SEE 71-0086) | N/A | 1 |
| 21 | HOSE *(TWO FEET REQUIRED) | 15-0238 | 1 | 58 | DECAL - TANK DRAIN (SEE 71-0086) | N/A | 1 |
| 22 | NUT | 23-0315 | 1 | 59 | PUMP | 3-0298 | 1 |
| 23 | AIR THROTTLE CONTROL | 33-0394 | 1 | 60 | AIR FILTER | 19-0226 | 1 |
| 24 | BOLT | 27-0121 | 8 | 61 | FILTER CANISTER | 19-0237 | 1 |
| 25 | WASHER | 28-0023 | 19 | 62 | BOLT | 27-0133 | 1 |
| 26 | LOCKNUT | 30-0159 | 8 | 63 | TIGHTENER BRACKET | 20-0650A01 | 1 |
| 27 | HOSE | 70-0380 | 1 | 64 | DECAL - MAINTENANCE INSTRUCTIONS (SEE 71-0086) | N/A | 1 |
| 28 | ENGINE | 1-0134 | 1 | 65 | ELBOW | 24-0267 | 1 |
| 29 | DECAL - MUFFLER HOT (SEE 71-0086) | N/A | 1 | 66 | PRESSURE GAUGE | 22-0271 | 2 |
| 30 | DECAL - ENGINE FUEL (SEE 71-0086) | N/A | 1 | 67 | MANIFOLD | 24-0266 | 1 |
| 31 | DECAL - CHECK OIL (SEE 71-0086) | N/A | 2 | 68 | PRESSURE RELIEF VALVE | 22-0267 | 1 |
| 32 | KEY | 43-0078 | 1 | 69 | REGULATOR | 22-0231 | 1 |
| 33 | BOLT | 27-0066 | 2 | 70 | NIPPLE | 24-0010 | 1 |
| 34 | SPACER | 33-0425 | 2 | 71 | PLUG | 24-0082 | 1 |
| 35 | BRACKET | 13-0189A01 | 1 | 72 | PLUG | 24-0009 | 1 |
| 36 | BOLT | 27-8071 | 2 | - | DECAL SET | 71-0086 | 1 |
| 37 | DECAL - RISK OF BURNS (SEE 71-0086) | N/A | 2 | | | | |

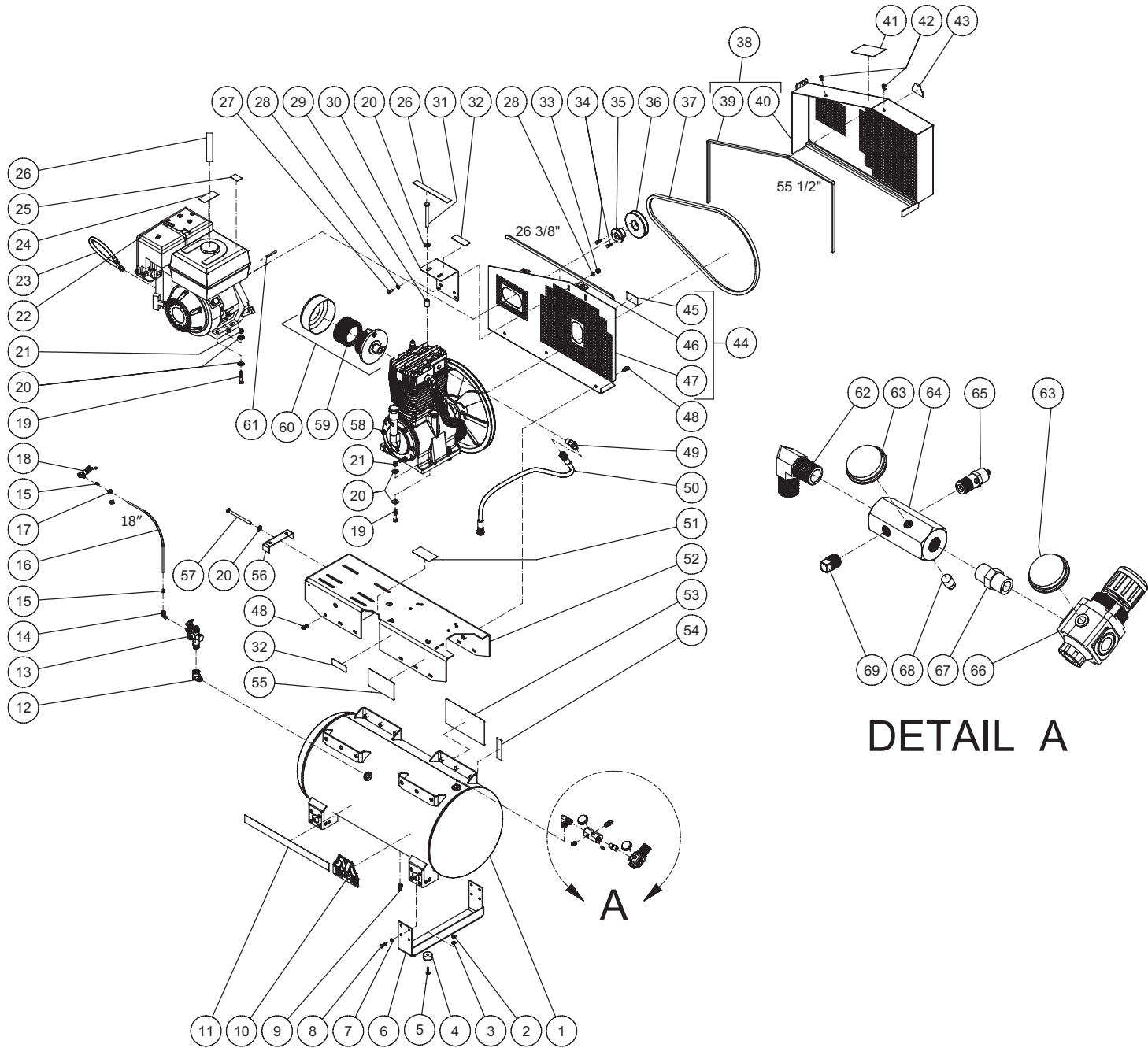
TANK ASSEMBLY FOR AM2-SH09-20M



AM2-SH098-20M-030912-MLK

| AM2-SH09-20M TANK ASSEMBLY | | | | | | | |
|----------------------------|--|------------|-----|------|--|------------|-----|
| ITEM | DESCRIPTION | PART # | QTY | ITEM | DESCRIPTION | PART # | QTY |
| 1 | TANK | 12-0192A01 | 1 | 34 | SHEAVE | 10-0039 | 1 |
| 2 | ISOLATOR | 14-0069 | 4 | 35 | BELT | 11-0062 | 1 |
| 3 | BOLT | 27-0015 | 6 | 36 | BELTGUARD COVER ASSEMBLY | 854-0067 | 1 |
| 4 | WASHER | 28-0002 | 4 | 37 | EDGING (FIVE FEET REQUIRED) | 33-0020 | 1 |
| 5 | LOCKNUT | 30-0155 | 4 | 38 | BELTGUARD FRONT | 6-0094A01 | 1 |
| 6 | PETCOCK | 23-0312 | 1 | 39 | DECAL - OPERATING INSTRUCTIONS (SEE 71-0086) | N/A | 1 |
| 7 | DECAL - Mi-T-M | 34-2169 | 1 | 40 | FASTENER | 33-0197 | 2 |
| 8 | DECAL - MAINTENANCE INSTRUCTIONS (SEE 71-0086) | N/A | 1 | 41 | DECAL - Mi-T-M | 34-2167 | 1 |
| 9 | DECAL - RISK OF BURNS (SEE 71-0086) | N/A | 2 | 42 | BELTGUARD BACK ASSEMBLY | 854-0066 | 1 |
| 10 | DECAL - STRIPE | 34-2188 | 1 | 43 | EDGING (THREE FEET REQUIRED) | 33-0020 | 1 |
| 11 | ELBOW | 24-0041 | 1 | 44 | DECAL - BELTGUARD IN PLACE (SEE 71-0086) | N/A | 1 |
| 12 | PILOT VALVE | 22-0270 | 1 | 45 | BELTGUARD BACK | 6-0093A01 | 1 |
| 13 | ELBOW | 23-0316 | 1 | 46 | BOLT | 27-9524 | 3 |
| 14 | TUBE SUPPORT | 23-0486 | 2 | 47 | PUMP | 3-0298 | 1 |
| 15 | HOSE *(TWO FEET REQUIRED) | 15-0238 | 1 | 48 | ELBOW | 24-0074 | 1 |
| 16 | NUT | 23-0315 | 1 | 49 | HOSE | 15-0243 | 1 |
| 17 | THROTTLE CONTROL | 33-0413 | 1 | 50 | DECAL - CAUTION/WARNING/DANGER (SEE 71-0086) | N/A | 1 |
| 18 | BOLT | 27-0121 | 8 | 51 | DECAL - TANK DRAIN (SEE 71-0086) | N/A | 1 |
| 19 | WASHER | 28-0023 | 19 | 52 | DECAL - SILVER STICKER | N/A | 1 |
| 20 | LOCKNUT | 30-0159 | 8 | 53 | TIGHTENER BRACKET | 20-0650A01 | 1 |
| 21 | OIL DRAIN HOSE | 70-0358 | 1 | 54 | BOLT | 27-0133 | 1 |
| 22 | ENGINE | 1-0065 | 1 | 55 | AIR FILTER | 19-0226 | 1 |
| 23 | DECAL - MUFFLER HOT (SEE 71-0086) | N/A | 1 | 56 | FILTER CANISTER | 19-0237 | 1 |
| 24 | DECAL - ENGINE FUEL (SEE 71-0086) | N/A | 1 | 57 | ELBOW | 24-0267 | 1 |
| 25 | DECAL - CHECK OIL (SEE 71-0086) | 3N/A | 2 | 58 | PRESSURE GAUGE | 22-0271 | 2 |
| 26 | KEY | 43-0078 | 1 | 59 | PRESSURE RELIEF VALVE | 22-0267 | 1 |
| 27 | BOLT | 27-0066 | 2 | 60 | PLUG | 24-0082 | 1 |
| 28 | WASHER | 28-0003 | 4 | 61 | REGULATOR | 22-0231 | 1 |
| 29 | SPACER | 33-0425 | 2 | 62 | NIPPLE | 24-0010 | 1 |
| 30 | BRACKET | 13-0189A01 | 1 | 63 | MANIFOLD | 24-0266 | 1 |
| 31 | BOLT | 27-8071 | 2 | 64 | PLUG | 24-0009 | 1 |
| 32 | LOCKNUT | 30-0157 | 2 | - | DECAL SET | 71-0086 | 1 |
| 33 | BUSHING | 9-0005 | 1 | | | | |

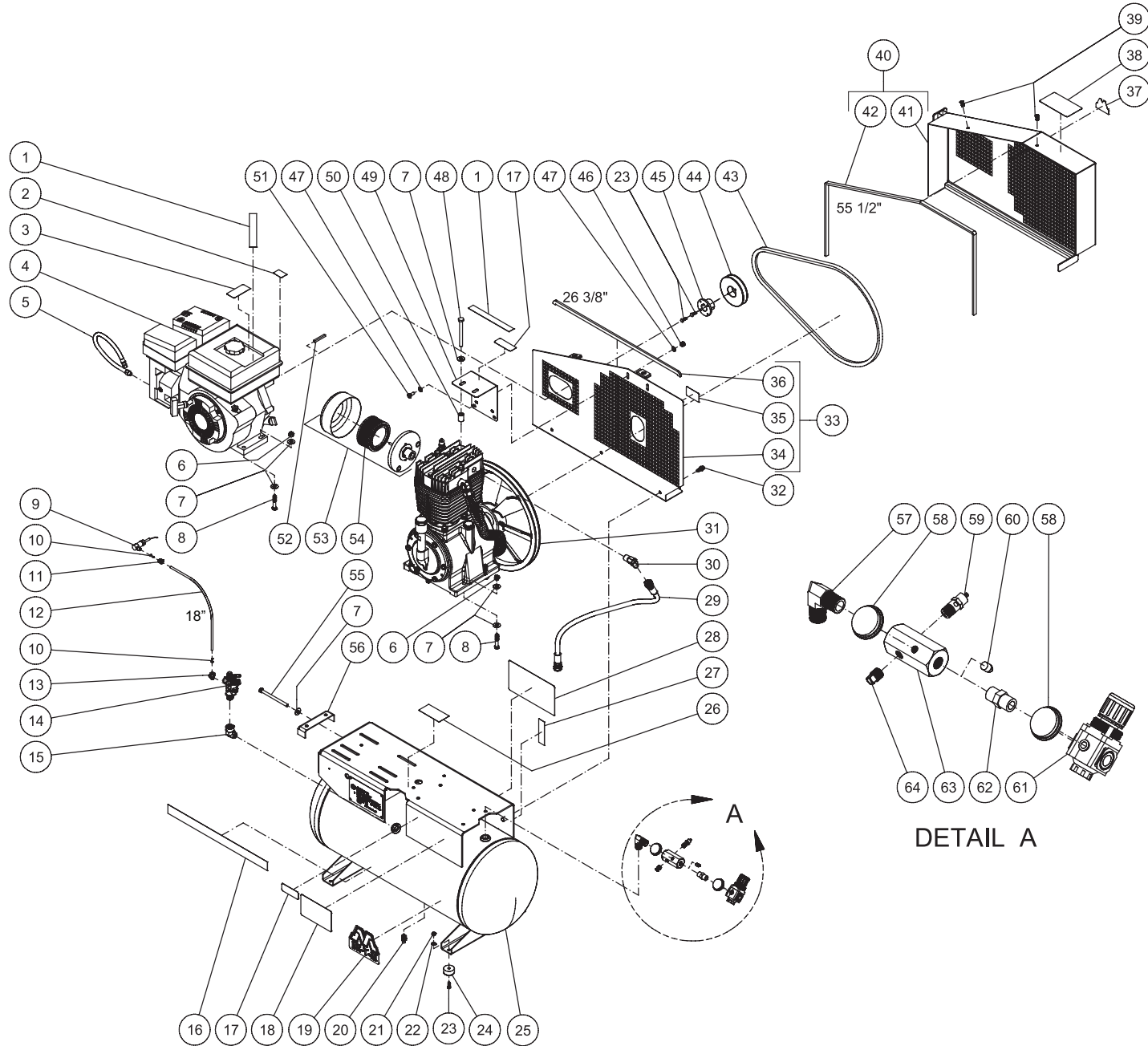
TANK ASSEMBLY FOR AM2-SH09-30M



AM2-SH09-30M-030912-MLK

| | | | | AM2-SH09-30M 030912-MLK | | | |
|----------------------------|-------------------------------------|------------|-----|-------------------------|--|------------|-----|
| AM2-SH09-30M TANK ASSEMBLY | | | | | | | |
| ITEM | DESCRIPTION | PART # | QTY | ITEM | DESCRIPTION | PART # | QTY |
| 1 | TANK | 12-0193A01 | 1 | 36 | SHEAVE | 10-0039 | 1 |
| 2 | LOCKNUT | 30-0155 | 4 | 37 | BELT | 11-0066 | 1 |
| 3 | WASHER | 28-0002 | 4 | 38 | BELTGUARD COVER ASSEMBLY | 854-0067 | 1 |
| 4 | ISOLATOR | 14-0069 | 4 | 39 | EDGING (FIVE FEET REQUIRED) | 33-0020 | 1 |
| 5 | BOLT | 27-0016 | 4 | 40 | BELTGUARD FRONT | 6-0094A01 | 1 |
| 6 | SUPPORT FOOT BRACKET | 20-0671A01 | 2 | 41 | DECAL - OPERATING INSTRUCTIONS (SEE 71-0086) | N/A | 1 |
| 7 | LOCKWASHER | 29-0007 | 16 | 42 | FASTENER | 33-0197 | 2 |
| 8 | BOLT | 27-0067 | 16 | 43 | DECAL - Mi-T-M | 34-2167 | 1 |
| 9 | PETCOCK | 23-0312 | 1 | 44 | BELTGUARD BACK ASSEMBLY | 854-0066 | 1 |
| 10 | DECAL - Mi-T-M | 34-2169 | 1 | 45 | DECAL - BELTGUARD IN PLACE (SEE 71-0086) | N/A | 1 |
| 11 | DECAL - STRIPE | 34-2189 | 1 | 46 | EDGING (THREE FEET REQUIRED) | 33-0020 | 1 |
| 12 | ELBOW | 24-0041 | 1 | 47 | BELTGUARD BACK | 6-0093A01 | 1 |
| 13 | PILOT VALVE | 22-0270 | 1 | 48 | BOLT | 27-9524 | 15 |
| 14 | ELBOW | 23-0316 | 1 | 49 | ELBOW | 24-0074 | 1 |
| 15 | TUBE SUPPORT | 23-0486 | 2 | 50 | HOSE | 15-0243 | 1 |
| 16 | HOSE *(TWO FEET REQUIRED) | 15-0238 | 1 | 51 | DECAL- SILVER STICKER | N/A | 1 |
| 17 | NUT | 23-0315 | 1 | 52 | BASEPLATE | 5-0197A01 | 1 |
| 18 | THROTTLE CONTROL | 33-0413 | 1 | 53 | DECAL - CAUTION/WARNING/DANGER (SEE 71-0086) | N/A | 1 |
| 19 | BOLT | 27-0121 | 8 | 54 | DECAL - TANK DRAIN (SEE 71-0086) | N/A | 1 |
| 20 | WASHER | 28-0023 | 19 | 55 | DECAL - MAINTENANCE INSTRUCTIONS (SEE 71-0086) | N/A | 1 |
| 21 | LOCKNUT | 30-0159 | 8 | 56 | TIGHTENER BRACKET | 20-0650A01 | 1 |
| 22 | ENGINE | 1-0065 | 1 | 57 | BOLT | 27-0133 | 1 |
| 23 | OIL DRAIN HOSE | 70-0358 | 1 | 58 | PUMP | 3-0298 | 1 |
| 24 | DECAL - MUFFLER HOT (SEE 71-0086) | N/A | 1 | 59 | AIR FILTER | 19-0226 | 1 |
| 25 | DECAL - ENGINE FUEL (SEE 71-0086) | N/A | 1 | 60 | FILTER CANISTER | 19-0237 | 1 |
| 26 | DECAL - CHECK OIL (SEE 71-0086) | N/A | 2 | 61 | KEY | 43-0078 | 1 |
| 27 | BOLT | 27-0066 | 2 | 62 | ELBOW | 24-0267 | 1 |
| 28 | WASHER | 28-0003 | 4 | 63 | PRESSURE GAUGE | 22-0271 | 2 |
| 29 | SPACER | 33-0425 | 2 | 64 | MANIFOLD | 24-0266 | 1 |
| 30 | BRACKET | 13-0189A01 | 1 | 65 | PRESSURE RELIEF VALVE | 22-0267 | 1 |
| 31 | BOLT | 27-8071 | 2 | 66 | REGULATOR | 22-0231 | 1 |
| 32 | DECAL - RISK OF BURNS (SEE 71-0086) | N/A | 2 | 67 | NIPPLE | 24-0010 | 1 |
| 33 | LOCKNUT | 30-0157 | 2 | 68 | PLUG | 24-0082 | 1 |
| 34 | BOLT | 27-0015 | 2 | 69 | PLUG | 24-0009 | 1 |
| 35 | BUSHING | 9-0005 | 1 | - | DECAL SET | 71-0086 | 1 |

TANK ASSEMBLY FOR AM2-SR09-20M

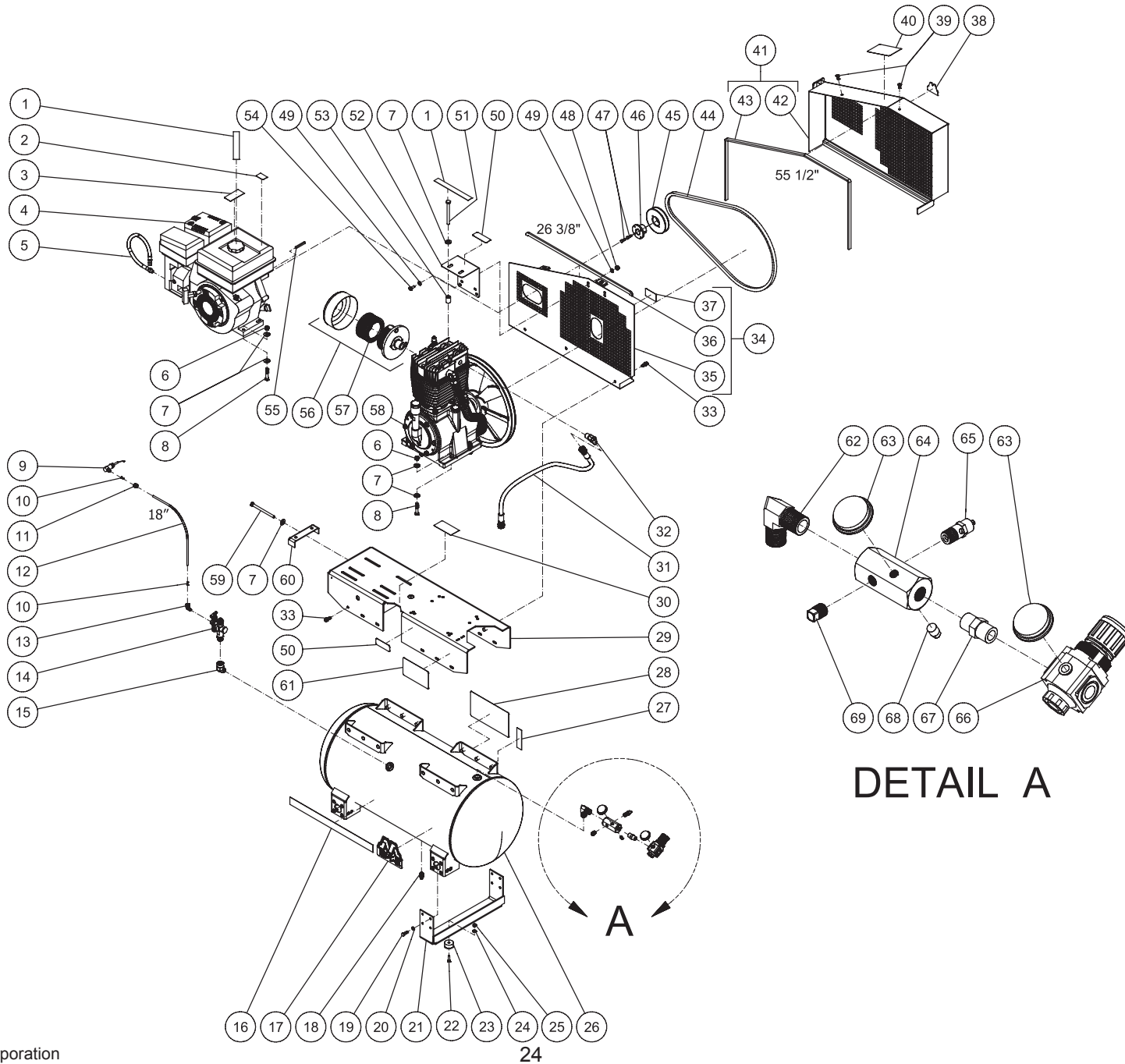


AM2-SR09-20M-031612-MLK

AM2-SR09-20M TANK ASSEMBLY

| ITEM | DESCRIPTION | PART # | QTY | ITEM | DESCRIPTION | PART # | QTY |
|------|--|------------|-----|---------------------------------|--|------------|-----|
| 1 | DECAL - CHECK OIL (SEE 71-0086) | N/A | 2 | 34 | BELTGUARD BACK | 6-0093A01 | 1 |
| 2 | DECAL - ENGINE FUEL (SEE 71-0086) | N/A | 1 | 35 | DECAL - BELTGUARD IN PLACE (SEE 71-0086) | N/A | 1 |
| 3 | DECAL - MUFFLER HOT (SEE 71-0086) | N/A | 1 | 36 | EDGING *(THREE FEET REQUIRED) | 33-0020 | 1 |
| 4 | ENGINE - SUBARU | 1-0134 | 1 | 37 | DECAL - Mi-T-M | 34-2167 | 1 |
| 5 | HOSE | 70-0380 | 1 | 38 | DECAL - OPERATING INSTRUCTIONS (SEE 71-0086) | N/A | 1 |
| 6 | LOCKNUT | 30-0159 | 8 | 39 | FASTENER | 33-0197 | 2 |
| 7 | WASHER | 28-0023 | 19 | 40 | BELTGUARD COVER ASSEMBLY (INC. 41-42) | 854-0067 | 1 |
| 8 | BOLT | 27-0121 | 8 | 41 | BELTGUARD FRONT | 6-0094A51 | 1 |
| 9 | AIR THROTTLE CONTROL | 33-0394 | 1 | 42 | EDGING *(FIVE FEET REQUIRED) | 33-0020 | 1 |
| 10 | TUBE SUPPORT | 23-0486 | 2 | 43 | BELT | 11-0062 | 1 |
| 11 | NUT | 23-0315 | 1 | 44 | SHEAVE | 10-0039 | 1 |
| 12 | HOSE *(TWO FEET REQUIRED) | 15-0238 | 1 | 45 | BUSHING | 9-0005 | 1 |
| 13 | ELBOW | 23-0316 | 1 | 46 | LOCKNUT | 30-0157 | 2 |
| 14 | PILOT VALVE | 22-0270 | 1 | 47 | WASHER | 28-0003 | 4 |
| 15 | ELBOW | 24-0041 | 1 | 48 | BOLT | 27-8071 | 2 |
| 16 | DECAL - STRIPE | 34-2189 | 1 | 49 | BRACKET | 13-0189A01 | 1 |
| 17 | DECAL - RISK OF BURNS (SEE 71-0086) | N/A | 2 | 50 | SPACER | 33-0425 | 2 |
| 18 | DECAL - MAINTENANCE INSTRUCTIONS (SEE 71-0086) | N/A | 1 | 51 | BOLT | 27-0066 | 2 |
| 19 | DECAL - Mi-T-M | 34-2169 | 1 | 52 | KEY | 43-0078 | 1 |
| 20 | PETCOCK | 23-0312 | 1 | 53 | FILTER CANISTER | 19-0237 | 1 |
| 21 | LOCKNUT | 30-0155 | 4 | 54 | AIR FILTER | 19-0226 | 1 |
| 22 | WASHER | 28-0002 | 4 | 55 | BOLT | 27-0133 | 1 |
| 23 | BOLT | 27-0015 | 6 | 56 | TIGHTENER BRACKET | 20-0650A01 | 1 |
| 24 | ISOLATOR | 14-0069 | 4 | 57 | ELBOW | 24-0267 | 1 |
| 25 | TANK | 12-0192A01 | 1 | 58 | PRESSURE GAUGE | 22-0271 | 2 |
| 26 | DECAL - SILVER STICKER | N/A | 1 | 59 | PRESSURE RELIEF VALVE | 22-0267 | 1 |
| 27 | DECAL - TANK DRAIN (SEE 71-0086) | N/A | 1 | 60 | PLUG | 24-0082 | 1 |
| 28 | DECAL - CAUTION/WARNING/DANGER (SEE 71-0086) | N/A | 1 | 61 | REGULATOR | 22-0231 | 1 |
| 29 | HOSE | 15-0243 | 1 | 62 | NIPPLE | 24-0010 | 1 |
| 30 | ELBOW | 24-0074 | 1 | 63 | MANIFOLD | 24-0266 | 1 |
| 31 | PUMP | 3-0298 | 1 | 64 | PLUG | 24-0009 | 1 |
| 32 | BOLT | 27-9524 | 3 | - | DECAL SET | 71-0086 | 1 |
| 33 | BELTGUARD BACK ASSEMBLY (INC. 34-36) | 854-0066 | 1 | *MUST ORDER IN ONE FOOT LENGTHS | | | |

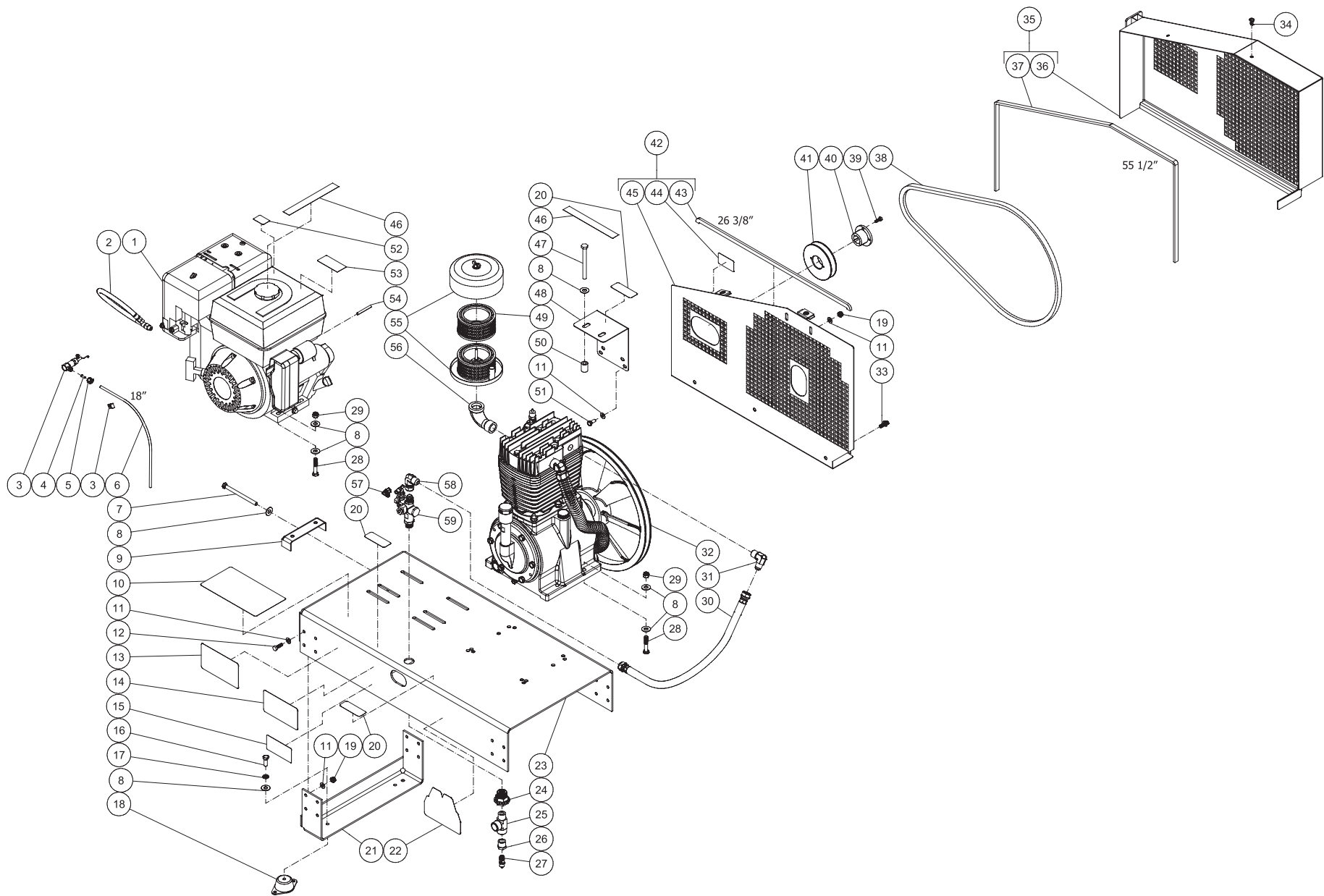
TANK ASSEMBLY FOR AM2-SR09-30M



AM2-SR09-30M-031612-MLK

| AM2-SR09-30M TANK ASSEMBLY | | | | | | | | |
|----------------------------|--|------------|-----|--|------|--|------------|-----|
| ITEM | DESCRIPTION | PART # | QTY | | ITEM | DESCRIPTION | PART # | QTY |
| 1 | DECAL - CHECK OIL (SEE 71-0086) | N/A | 2 | | 36 | EDGING (THREE FEET REQUIRED) | 33-0020 | 1 |
| 2 | DECAL - ENGINE FUEL (SEE 71-0086) | N/A | 1 | | 37 | DECAL - BELTGUARD IN PLACE (SEE 71-0086) | N/A | 1 |
| 3 | DECAL - MUFFLER HOT (SEE 71-0086) | N/A | 1 | | 38 | DECAL - Mi-T-M | 34-2167 | 1 |
| 4 | ENGINE | 1-0134 | 1 | | 39 | FASTENER | 33-0197 | 2 |
| 5 | HOSE | 70-0380 | 1 | | 40 | DECAL - OPERATING INSTRUCTIONS (SEE 71-0086) | N/A | 1 |
| 6 | LOCKNUT | 30-0159 | 8 | | 41 | BELTGUARD COVER ASSEMBLY | 854-0067 | 1 |
| 7 | WASHER | 28-0023 | 19 | | 42 | BELTGUARD FRONT | 6-0094A01 | 1 |
| 8 | BOLT | 27-0121 | 8 | | 43 | EDGING (FIVE FEET REQUIRED) | 33-0020 | 1 |
| 9 | AIR THROTTLE CONTROL | 33-0394 | 1 | | 44 | BELT | 11-0066 | 1 |
| 10 | TUBE SUPPORT | 23-0486 | 2 | | 45 | SHEAVE | 10-0039 | 1 |
| 11 | NUT | 23-0315 | 1 | | 46 | BUSHING | 9-0005 | 1 |
| 12 | HOSE *(TWO FEET REQUIRED) | 15-0238 | 1 | | 47 | BOLT | 27-0015 | 2 |
| 13 | ELBOW | 23-0316 | 1 | | 48 | LOCKNUT | 30-0157 | 2 |
| 14 | PILOT VALVE | 22-0270 | 1 | | 49 | WASHER | 28-0003 | 4 |
| 15 | ELBOW | 24-0041 | 1 | | 50 | DECAL - RISK OF BURNS (SEE 71-0086) | N/A | 2 |
| 16 | DECAL - STRIPE | 34-2189 | 1 | | 51 | BOLT | 27-8071 | 2 |
| 17 | DECAL - Mi-T-M | 34-2169 | 1 | | 52 | BRACKET | 13-0189A01 | 1 |
| 18 | PETCOCK | 23-0312 | 1 | | 53 | SPACER | 33-0425 | 2 |
| 19 | BOLT | 27-0067 | 16 | | 54 | BOLT | 27-0066 | 2 |
| 20 | LOCKWASHER | 29-0007 | 16 | | 55 | KEY | 43-0078 | 1 |
| 21 | SUPPORT FOOT BRACKET | 20-0671A01 | 2 | | 56 | FILTER CANISTER | 19-0237 | 1 |
| 22 | BOLT | 27-0016 | 4 | | 57 | AIR FILTER | 19-0226 | 1 |
| 23 | ISOLATOR | 14-0069 | 4 | | 58 | PUMP | 3-0298 | 1 |
| 24 | WASHER | 28-0002 | 4 | | 59 | BOLT | 27-0133 | 1 |
| 25 | LOCKNUT | 30-0155 | 4 | | 60 | TIGHTENER BRACKET | 20-0650A01 | 1 |
| 26 | TANK | 12-0193A01 | 1 | | 61 | DECAL - MAINTENANCE INSTRUCTIONS (SEE 71-0086) | N/A | 1 |
| 27 | DECAL - TANK DRAIN (SEE 71-0086) | N/A | 1 | | 62 | ELBOW | 24-0267 | 1 |
| 28 | DECAL - CAUTION/WARNING/DANGER (SEE 71-0086) | N/A | 1 | | 63 | PRESSURE GAUGE | 22-0271 | 2 |
| 29 | BASEPLATE | 5-0197A01 | 1 | | 64 | MANIFOLD | 24-0266 | 1 |
| 30 | DECAL- SILVER STICKER | N/A | 1 | | 65 | PRESSURE RELIEF VALVE | 22-0267 | 1 |
| 31 | HOSE | 15-0243 | 1 | | 66 | REGULATOR | 22-0231 | 1 |
| 32 | ELBOW | 24-0074 | 1 | | 67 | NIPPLE | 24-0010 | 1 |
| 33 | BOLT | 27-9524 | 15 | | 68 | PLUG | 24-0082 | 1 |
| 34 | BELTGUARD BACK ASSEMBLY | 854-0066 | 1 | | 69 | PLUG | 24-0009 | 1 |
| 35 | BELTGUARD BACK | 6-0093A01 | 1 | | - | DECAL SET | 71-0086 | 1 |

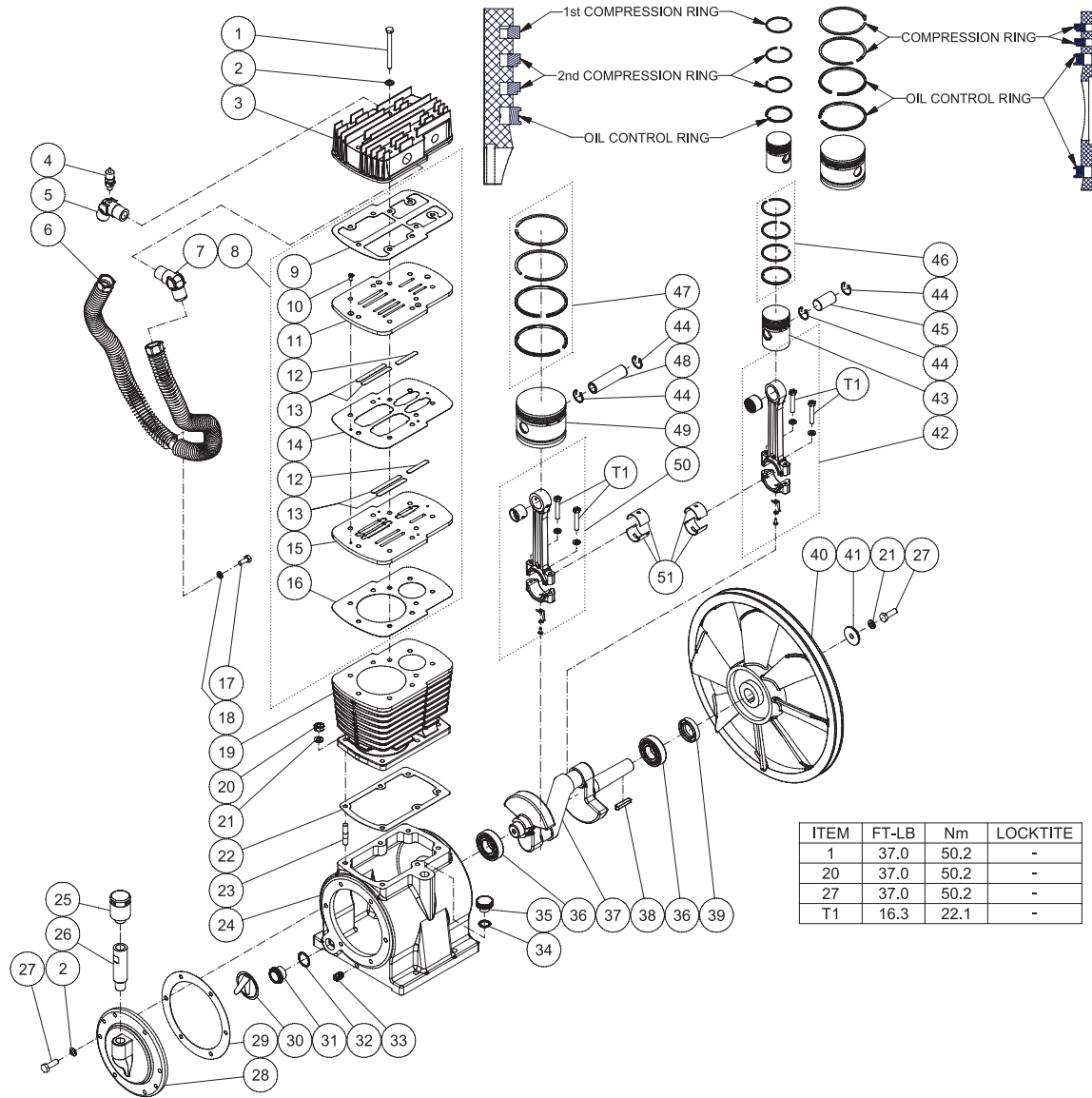
BASE MOUNT ASSEMBLY FOR AM2-SH09-B



AM2-SH09-B 030912-MLK

| AM2-SH09-B 030912-MLK | | | | | | | |
|-----------------------|--|------------|-----|------|--|------------|-----|
| AM2-SH09-B | | | | | | | |
| ITEM | DESCRIPTION | PART # | QTY | ITEM | DESCRIPTION | PART # | QTY |
| 1 | ENGINE | 1-0161 | 1 | 31 | ELBOW | 24-0074 | 1 |
| 2 | OIL DRAIN HOSE | 70-0358 | 1 | 32 | PUMP | 3-0298 | 1 |
| 3 | THROTTLE CONTROL | 33-0413 | 1 | 33 | BOLT | 27-9524 | 3 |
| 4 | TUBE SUPPORT | 23-0486 | 1 | 34 | FASTENER | 33-0197 | 2 |
| 5 | NUT | 23-0315 | 1 | 35 | BELTGUARD COVER ASSEMBLY | 854-0067 | 1 |
| 6 | HOSE *(TWO FEET REQUIRED) | 15-0238 | 1 | 36 | BELTGUARD FRONT | 6-0094A01 | 1 |
| 7 | BOLT | 27-0133 | 1 | 37 | EDGING (FIVE FEET REQUIRED) | 33-0020 | 1 |
| 8 | WASHER | 28-0023 | 23 | 38 | BELT | 11-0066 | 1 |
| 9 | TIGHTENER BRACKET | 20-0650A01 | 1 | 39 | BOLT | 27-0015 | 2 |
| 10 | DECAL - CAUTION/WARNING/DANGER (SEE 71-0086) | N/A | 1 | 40 | BUSHING | 9-0005 | 1 |
| 11 | WASHER | 28-0003 | 36 | 41 | SHEAVE | 10-0039 | 1 |
| 12 | BOLT | 27-0067 | 16 | 42 | BELTGUARD BACK ASSEMBLY | 854-0066 | 1 |
| 13 | DECAL - MAINTENANCE INSTRUCTIONS (SEE 71-0086) | N/A | 1 | 43 | EDGING (THREE FEET REQUIRED) | 33-0020 | 1 |
| 14 | DECAL - OPERATING INSTRUCTIONS (SEE 71-0086) | N/A | 1 | 44 | DECAL - BELTGUARD IN PLACE (SEE 71-0086) | N/A | 1 |
| 15 | DECAL- DATA PLATE | N/A | 1 | 45 | BELTGUARD BACK | N/A | 1 |
| 16 | BOLT | 27-0117 | 4 | 46 | DECAL - CHECK OIL (SEE 71-0086) | N/A | 2 |
| 17 | LOCKWASHER | 29-0008 | 4 | 47 | BOLT | 27-8071 | 2 |
| 18 | ISOLATOR | 14-0109 | 4 | 48 | BRACKET | 13-0189A01 | 1 |
| 19 | LOCKNUT | 30-0157 | 18 | 49 | AIR FILTER | 19-0226 | 1 |
| 20 | DECAL - RISK OF BURNS (SEE 71-0086) | N/A | 3 | 50 | SPACER | 33-0425 | 2 |
| 21 | SUPPORT FOOT BRACKET | 20-0671A01 | 2 | 51 | BOLT | 27-0066 | 2 |
| 22 | DECAL - Mi-T-M | 34-2169 | 1 | 52 | DECAL - ENGINE FUEL (SEE 71-0086) | N/A | 1 |
| 23 | BASEPLATE | 5-0252A01 | 1 | 53 | DECAL - MUFFLER HOT (SEE 71-0086) | N/A | 1 |
| 24 | ADAPTER | 23-0365 | 1 | 54 | KEY | 43-0078 | 1 |
| 25 | STREET TEE | 24-0242 | 1 | 55 | FILTER CANISTER | 19-0237 | 1 |
| 26 | REDUCER | 23-0056 | 1 | 56 | ELBOW | 23-0088 | 1 |
| 27 | PRESSURE RELIEF VALVE | 22-0267 | 1 | 57 | ELBOW | 23-0316 | 1 |
| 28 | BOLT | 27-0121 | 8 | 58 | ELBOW | 24-0272 | 1 |
| 29 | LOCKNUT | 30-0159 | 8 | 59 | PILOT VALVE | 22-0270 | 1 |
| 30 | HOSE | 15-0243 | 1 | - | DECAL SET | 71-0086 | 1 |

TWO STAGE COMPRESSOR (3-0298)

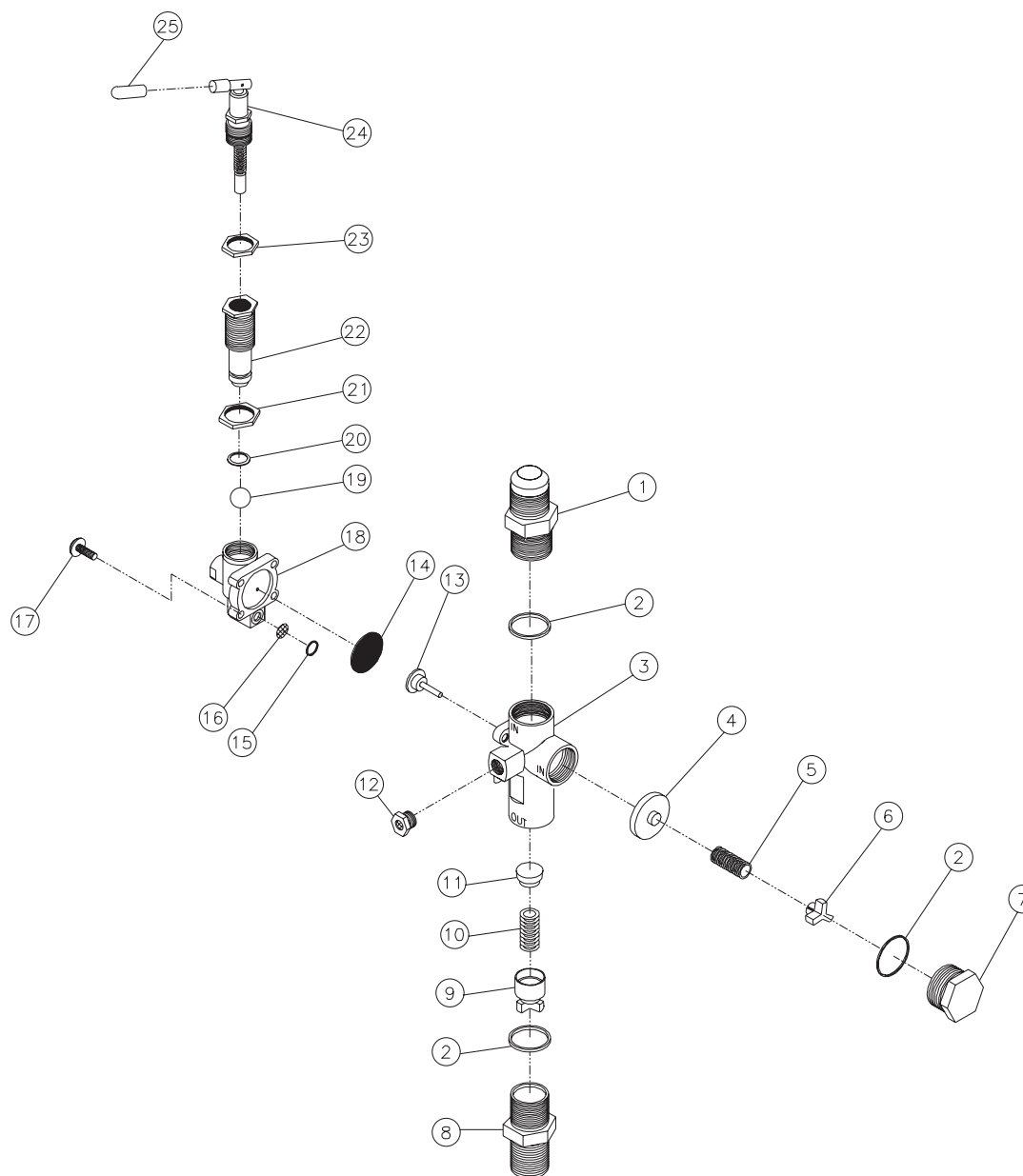


3-0298 021114 JDK

PUMP ASSEMBLY

| ITEM | DESCRIPTION | PART # | QTY | | | | |
|------|--------------------------------------|---------|-----|--|----|--|-----------|
| 1 | BOLT | 27-8043 | 9 | | 27 | BOLT | 27-8061 7 |
| 2 | COPPER WASHER | 28-1059 | 15 | | 28 | REAR CRANKCASE COVER | 46-1278 1 |
| 3 | CYLINDER HEAD | 46-1272 | 1 | | 29 | GASKET - REAR CRANKCASE COVER | N/A 1 |
| 4 | LP SAFETY VALVE | 22-0362 | 1 | | 30 | OBSTRUCT OIL NET | 46-1279 1 |
| 5 | 65° OUTLET ELBOW W/PORT | 24-0304 | 1 | | 31 | OIL LEVEL SIGHT GLASS | 46-1280 1 |
| 6 | INTERCOOLER TUBE | 46-1273 | 1 | | 32 | O-RING | 25-0150 1 |
| 7 | 65° OUTLET ELBOW | 24-0305 | 1 | | 33 | PLUG | 24-0009 1 |
| 8 | KIT - VALVE PLATE ASSY - (INC. 9-16) | 70-0473 | 1 | | 34 | O-RING | 25-0160 1 |
| 9 | GASKET - VALVE PLATE (UPPER) | N/A | 1 | | 35 | OIL FILL CAP | 46-1281 1 |
| 10 | SCREW | N/A | 4 | | 36 | BALL BEARING | 48-0024 2 |
| 11 | UPPER VALVE SEAT | N/A | 1 | | 37 | PUMP CRANKSHAFT | 46-1282 1 |
| 12 | HP VALVE REED | N/A | 2 | | 38 | KEY | 43-0125 1 |
| 13 | LP VALVE REED | N/A | 4 | | 39 | OIL SEAL | 26-0302 1 |
| 14 | GASKET - VALVE PLATE (MIDDLE) | N/A | 1 | | 40 | FLYWHEEL | 10-0139 1 |
| 15 | LOWER VALVE SEAT | N/A | 1 | | 41 | WASHER | N/A 1 |
| 16 | GASKET - VALVE PLATE (LOWER) | N/A | 1 | | 42 | KIT - HP CONNECTING ROD ASSEMBLY (INC. 49) | 70-0468 1 |
| 17 | BOLT | 27-8032 | 1 | | 43 | PISTON | 46-1283 1 |
| 18 | LOCKWASHER | 29-0054 | 1 | | 44 | PISTON SNAP RING | 46-1284 4 |
| 19 | CYLINDER | 46-1274 | 1 | | 45 | PISTON PIN | 46-1285 1 |
| 20 | NUT | 30-7203 | 6 | | 46 | KIT - HP PISTON RING | 70-0469 1 |
| 21 | LOCKWASHER | 29-0055 | 7 | | 47 | KIT - LP PISTON RING | 70-0470 1 |
| 22 | GASKET - CYLINDER | N/A | 1 | | 48 | PISTON PIN | 46-1286 1 |
| 23 | STUD | 27-8991 | 6 | | 49 | PISTON | 46-1287 1 |
| 24 | PUMP CRANKCASE | 46-1275 | 1 | | 50 | KIT - LP CONNECTING ROD ASSY (INC. 49) | 70-0471 1 |
| 25 | BREATHER ASSY | 46-1276 | 1 | | 51 | CONNECTING ROD BUSHING | 46-1288 4 |
| 26 | BREATHER PIPE | 46-1277 | 1 | | - | KIT - PUMP GASKET - (INC. 9, 14, 16, 20, 27) | 70-0472 1 |

PILOT VALVE (22-0270)



22-0270-062905-DLG

22-0270-062905-DLG

| PILOT VALVE (22-0270) | | | |
|-----------------------|---|----------|-----|
| REF # | DESCRIPTION | PART # | QTY |
| 1 | Inlet Port Fitting | N/A | 1 |
| 2 | O-ring (See 70-0241) | N/A Sep. | 3 |
| 3 | Main Body | N/A | 1 |
| 4 | Piston Assembly-Unloader Valve (See 70-0241) | N/A Sep. | 1 |
| 5 | Spring-Unloader Valve (See 70-0241) | N/A Sep. | 1 |
| 6 | Spring Seat-Unloader Valve | N/A | 1 |
| 7 | Cap | N/A | 1 |
| 8 | Discharge Port Fitting | N/A | 1 |
| 9 | Spring Seat Assembly-Check Valve | N/A | 1 |
| 10 | Spring-Check Valve (See 70-0241) | N/A Sep. | 1 |
| 11 | Piston-Check Valve (See 70-0241) | N/A Sep. | 1 |
| 12 | Muffler | 23-0419 | 1 |
| 13 | Stem Unloader (See 70-0241) | N/A Sep. | 1 |
| 14 | Diaphragm (See 70-0241) | N/A Sep. | 1 |
| 15 | O-ring (See 70-0241) | N/A Sep. | 1 |
| 16 | Screen (See 70-0241) | N/A Sep. | 1 |
| 17 | Screw w/Washer | N/A | 4 |
| 18 | Pilot Body | N/A | 1 |
| 19 | Ball (See 70-0241) | N/A Sep. | 1 |
| 20 | O-ring (See 70-0241) | N/A Sep. | 1 |
| 21 | Differential Adjusting Locknut | N/A | 1 |
| 22 | Differential Adjusting Nut | N/A | 1 |
| 23 | Pressure Adjusting Locknut | N/A | 1 |
| 24 | Pressure Adjusting Toggle Assembly (See 70-0241) | N/A Sep. | 1 |
| 25 | Red Toggle Cover | N/A | 1 |
| | Repair Kit (Includes 4-5, 10-11, 13-16, 19-20, 24 and 3 each 2) | 70-0241 | |



Call AAA Rent-All at 225-291-1356 for assistance ordering parts

Manufactured by Mi-T-M
8650 Enterprise Drive, Peosta IA 52068
563-556-7484/ Fax 563-556-1235